



31 May 2019

Edition 11

# AUSTRALIAN NOTICES TO MARINERS

## Notices 515 - 572

Published fortnightly by the Australian Hydrographic Office



Australian Notices to Mariners are the authority for correcting charts and publications published by the Australian Hydrographic Office covering Australia, Papua New Guinea, Solomon Islands, Australian Antarctic Territory and Timor-Leste.

Commodore F.T. FREEMAN RAN  
*Hydrographer of Australia*

---

### SECTIONS.

- I. **Australian Notices to Mariners, including blocks and notes.**
- II. **Hydrographic Reports.**
- III. **Navigational Warnings.**

### SUPPLEMENTS.

- I. **Tracings**
- II. **Cumulative List of Australian Notices to Mariners.**
- III. **Cumulative List of Temporary and Preliminary Australian Notices to Mariners.**
- IV. **Temporary and Preliminary Notices in force.**
- V. **Amendments to Admiralty List of Lights and Fog Signals (Vol K), Radio Signals (NP 281(2), 282, 283(2), 285, 286(4)) and Sailing Directions (NP 9, 13, 14, 15, 33, 34, 35, 36, 39, 44, 51, 60, 61, 62, 100, 136).**

---

© Commonwealth of Australia 2019

This work is copyright. Apart from any use permitted under the Copyright Act 1968, no part may be reproduced by any process, adapted, communicated or commercially exploited without prior written permission from The Commonwealth represented by the Australian Hydrographic Office.

## IMPORTANT NOTICE

This edition of Notices to Mariners includes all significant information affecting AHO products which the AHO has become aware of since the last edition. All reasonable efforts have been made to ensure the accuracy and completeness of the information, including third party information, on which these updates are based. The AHO regards third parties from which it receives information as reliable, however the AHO cannot verify all such information and errors may therefore exist. The AHO does not accept liability for errors in third party information.

---

## GENERAL INSTRUCTIONS

The substance of these notices should be inserted on the charts affected.

Bearings are referred to the true compass and are reckoned clockwise from North; those relating to lights are given as seen by an observer from seaward.

Positions quoted in notices relate to WGS84 which is the horizontal datum for all charts produced by the Australian Hydrographic Office.

The range quoted for a light is its nominal range.

Depths are with reference to the chart datum of each chart. Heights are above mean high water springs or mean higher high water, as appropriate.

The capital letter (P) or (T) after the number of any notice denotes a preliminary or temporary notice respectively, which are contained separately at the end of the permanent notices.

---

## REPORTING OF DANGERS

Mariners are particularly requested to notify the AUSTRALIAN HYDROGRAPHIC OFFICE, Locked Bag 8801 Wollongong, NSW 2500 (Fax 02-4223 6599, e-mail [datacentre@hydro.gov.au](mailto:datacentre@hydro.gov.au) or, alternatively by filling in and submitting the [Hydrographic Notes](#) forms located on the web site – [www.hydro.gov.au](http://www.hydro.gov.au)), immediately on the discovery of new dangers or suspected dangers to navigation. For changes or defects in aids to navigation notify AusSAR (Fax 02-6230 6868 or email [rccaus@amsa.gov.au](mailto:rccaus@amsa.gov.au)).

---

## AUTHORISED USE

Copies of Australian notices are available free of charge from the Australian Hydrographic Office (AHO) website ([www.hydro.gov.au](http://www.hydro.gov.au)) and through the eNotices (email) service ([www.hydro.gov.au/enotices/enotices.htm](http://www.hydro.gov.au/enotices/enotices.htm)).

Individual Notices may be copied for the purpose of inserting Notice substance on official charts and publications. Paper copies may be printed by chart agents and distributed to customers on a cost recovery basis. Participating chart agents are listed on the AHO website as providing a 'Paper Notices to Mariners' service ([www.hydro.gov.au/webapps/jsp/agents/agents-list.jsp](http://www.hydro.gov.au/webapps/jsp/agents/agents-list.jsp)). Copies of the notices may not be sold for profit without prior written agreement.

## NUMERICAL INDEX OF NOTICES TO MARINERS

### Edition No 11

| Notices | Aus Chart, INT Chart, ENC Cell, AHP, BA Pubs   |
|---------|--|
| 515     | Aus 52, 58, 68, 83, 111, 112, 114, 243, 249, 250, 280, 281, 509, 609, 701, 739, 740, 741 |
| 516     | Aus 51, 207, 508, 602, INT 9032, PNG 508   |
| 517     | Aus 194, 195   |
| 518     | Aus 255, 826   |
| 519     | Aus 237  |
| 520     | Aus 243  |
| 521     | Aus 262, 830   |
| 522     | Aus 263, 264   |
| 523     | Aus 247, 265, 819  |
| 524     | Aus 230, 814   |
| 525     | Aus 241, 817   |
| 526     | Aus 821, 824   |
| 527     | Aus 259, 267, 828  |
| 528     | Aus 235, 815   |
| 529     | Aus 230, 814   |
| 530     | Aus 293, 294, 296, 301, 377, 700, 701, 840   |
| 531     | Aus 256, 827   |
| 532     | Aus 509, 513, 518, 4620, 4621, INT 620, 621  |
| 533     | Aus 386  |
| 534     | Aus 662  |
| 535     | Aus 662  |
| 536     | Aus 839  |
| 537     | Aus 50   |
| 538     | Aus 73   |
| 539     | Aus 81   |
| 540     | Aus 326, 740, 4071, 4603, 4722, INT 71, 603, 722   |
| 541     | Aus 55, 56   |
| 542     | Aus 130  |
| 543     | Aus 176, 793   |
| 544(T)  | Aus 269  |
| 545(T)  | Aus 237, 238   |
| 546(T)  | Aus 258, 829   |
| 547(T)  | Aus 249, 250   |
| 548(P)  | Aus 821, 824   |
| 549(T)  | Aus 256  |
| 550(T)  | Aus 236  |
| 551(T)  | Aus 236  |
| 552(T)  | Aus 236  |
| 553(T)  | Aus 814  |
| 554(T)  | Aus 256, 827   |
| 555(T)  | Aus 248, 367, 820  |
| 556(T)  | Aus 256, 257   |
| 557(T)  | Aus 508, 625   |
| 558(T)  | Aus 625, PNG 508   |
| 559(T)  | Aus 328, 4723, INT 723   |
| 560(T)  | Aus 50, 51   |
| 561(T)  | Aus 73   |
| 562(T)  | Aus 81, 751  |
| 563(T)  | Aus 327, 4723, INT 723   |
| 564(T)  | Aus 328, 4723, INT 723   |
| 565(T)  | Aus 328, 329, 744, 4723, 4725, INT 723, 725  |
| 566(T)  | Aus 328, 744   |
| 567(T)  | Aus 52, 53, 54   |
| 568(T)  | Aus 32   |
| 569(T)  | Aus 130, 137, 138, 781   |
| 570(T)  | Aus 357, 487   |
| 571(T)  | Aus 357  |
| 572(T)  | Aus 150, 151, 801  |

## NUMERICAL INDEX OF CHARTS AFFECTED

### Edition No 11

| Aus Chart | Notices                     | Aus Chart | Notices                        |
|-----------|-----------------------------|-----------|--------------------------------|
| Aus 32    | 568(T)                      | Aus 327   | 563(T)                         |
| Aus 50    | 537, 560(T)                 | Aus 328   | 559(T), 564(T), 565(T), 566(T) |
| Aus 51    | 516, 560(T)                 | Aus 329   | 565(T)                         |
| Aus 52    | 515, 567(T)                 | Aus 357   | 570(T), 571(T)                 |
| Aus 53    | 567(T)                      | Aus 367   | 555(T)                         |
| Aus 54    | 567(T)                      | Aus 377   | 530                            |
| Aus 55    | 541                         | Aus 386   | 533                            |
| Aus 56    | 541                         | Aus 487   | 570(T)                         |
| Aus 58    | 515                         | Aus 508   | 516, 557(T)                    |
| Aus 68    | 515                         | Aus 509   | 515, 532                       |
| Aus 73    | 538, 561(T)                 | Aus 513   | 532                            |
| Aus 81    | 539, 562(T)                 | Aus 518   | 532                            |
| Aus 83    | 515                         | Aus 602   | 516                            |
| Aus 111   | 515                         | Aus 609   | 515                            |
| Aus 112   | 515                         | Aus 625   | 557(T), 558(T)                 |
| Aus 114   | 515                         | Aus 662   | 534, 535                       |
| Aus 130   | 542, 569(T)                 | Aus 700   | 530                            |
| Aus 137   | 569(T)                      | Aus 701   | 515, 530                       |
| Aus 138   | 569(T)                      | Aus 739   | 515                            |
| Aus 150   | 572(T)                      | Aus 740   | 515, 540                       |
| Aus 151   | 572(T)                      | Aus 741   | 515                            |
| Aus 176   | 543                         | Aus 744   | 565(T), 566(T)                 |
| Aus 194   | 517                         | Aus 751   | 562(T)                         |
| Aus 195   | 517                         | Aus 781   | 569(T)                         |
| Aus 207   | 516                         | Aus 793   | 543                            |
| Aus 230   | 524, 529                    | Aus 801   | 572(T)                         |
| Aus 235   | 528                         | Aus 814   | 524, 529, 553(T)               |
| Aus 236   | 550(T), 551(T), 552(T)      | Aus 815   | 528                            |
| Aus 237   | 519, 545(T)                 | Aus 817   | 525                            |
| Aus 238   | 545(T)                      | Aus 819   | 523                            |
| Aus 241   | 525                         | Aus 820   | 555(T)                         |
| Aus 243   | 515, 520                    | Aus 821   | 526, 548(P)                    |
| Aus 247   | 523                         | Aus 824   | 526, 548(P)                    |
| Aus 248   | 555(T)                      | Aus 826   | 518                            |
| Aus 249   | 515, 547(T)                 | Aus 827   | 531, 554(T)                    |
| Aus 250   | 515, 547(T)                 | Aus 828   | 527                            |
| Aus 255   | 518                         | Aus 829   | 546(T)                         |
| Aus 256   | 531, 549(T), 554(T), 556(T) | Aus 830   | 521                            |
| Aus 257   | 556(T)                      | Aus 839   | 536                            |
| Aus 258   | 546(T)                      | Aus 840   | 530                            |
| Aus 259   | 527                         | Aus 4071  | 540                            |
| Aus 262   | 521                         | Aus 4603  | 540                            |
| Aus 263   | 522                         | Aus 4620  | 532                            |
| Aus 264   | 522                         | Aus 4621  | 532                            |
| Aus 265   | 523                         | Aus 4722  | 540                            |
| Aus 267   | 527                         | Aus 4723  | 559(T), 563(T), 564(T), 565(T) |
| Aus 269   | 544(T)                      | Aus 4725  | 565(T)                         |
| Aus 280   | 515                         | PNG 508   | 516, 558(T)                    |
| Aus 281   | 515                         |           |                                |
| Aus 293   | 530                         |           |                                |
| Aus 294   | 530                         |           |                                |
| Aus 296   | 530                         |           |                                |
| Aus 301   | 530                         |           |                                |
| Aus 326   | 540                         |           |                                |

| INT Chart | Notices                        |
|-----------|--------------------------------|
| INT 9032  | 516                            |
| INT 71    | 540                            |
| INT 603   | 540                            |
| INT 620   | 532                            |
| INT 621   | 532                            |
| INT 722   | 540                            |
| INT 723   | 559(T), 563(T), 564(T), 565(T) |
| INT 725   | 565(T)                         |

**515 AUSTRALIA - Products - New Charts and New Editions to be published shortly**

Australian Hydrographic Office

**New Charts to be published shortly**

| <i>Chart</i> | <i>Title</i>   | <i>Scale</i> | <i>Expected<br/>Publication Date</i> | <i>Remarks</i>  |
|--------------|--|--------------|--------------------------------------|---|
| PNG 509      | Papua New Guinea - North East Coast - Long Reef to Normanby Island | 1: 150 000   | 14 June 2019                         | Adoption of Papua New Guinea chart numbering. Replaces Aus 509. General updating throughout including new bathymetric data and submarine cable. |

**New Editions to be published shortly**

| <i>Chart</i> | <i>Title</i>  | <i>Scale</i> | <i>Expected<br/>Publication<br/>Date</i> | <i>Remarks</i>  |
|--------------|---|--------------|--|---|
| Aus 249      | Australia - East Coast - Queensland - Approaches to Hay Point and Mackay    | 1:75 000     | 14 June 2019                             | New edition with general updating throughout; including latest bathymetric data and Restricted Area limits.                   |
| Aus 250      | Australia - East Coast - Queensland - Plans of Hay Point and Mackay Harbour |              | 14 June 2019                             | New edition with general updating throughout; including latest bathymetric data and Restricted Area limits.                   |
|              | Plans:  |              |  |   |
|              | Hay Point   | 1:15 000     |  |   |
|              | Mackay Harbour  | 1:10 000     |  |   |
| Aus 609      | South Pacific Ocean - Norfolk Island  |              | 14 June 2019                             | New edition with chart rescheme and general updating throughout; including new bathymetric data. Produced with blue contours. |
|              | Plans:  |              |  |   |
|              | Cascade Bay   | 1:7 500      |  |   |
|              | Sydney Bay  | 1:7 500      |  |   |
|              | Ball Bay  | 1:10 000     |  |   |
|              | Norfolk and Phillip Islands   | 1:37 500     |  |   |
|              | Approaches to Norfolk Island  | 1:300 000    |  |   |

**Charts to be withdrawn**

| <i>Chart</i> | <i>Remarks</i>                      |
|--------------|-------------------------------------|
| Aus 509      | On publication of new chart PNG 509 |

**Charts to be withdrawn without replacement in May 2019**

| <i>Chart</i>               | <i>Title</i>  | <i>Scale</i> | <i>Publication Date</i> |
|----------------------------|---|--------------|-------------------------|
| Aus 52<br><b>Edition 3</b> | Australia - North West Coast - Western Australia - Entrance Channel to Port Hedland | 1:25 000     | 24 October 2014         |
| Aus 83<br><b>Edition 1</b> | Australia - West Coast - Plans in Western Australia (Sheet 5)                       |              | 18 May 2012             |
|                            | Plans:  |              |                         |
|                            | Recruit Bay   | 1:25 000     |                         |
|                            | Easter Group  | 1:25 000     |                         |

**Charts to be withdrawn without replacement in June 2019**

| <i>Chart</i>                | <i>Title</i>  | <i>Scale</i> | <i>Publication Date</i> |
|-----------------------------|---|--------------|-------------------------|
| Aus 58<br><b>Edition 8</b>  | Australia - North West Coast - Western Australia - Port of Dampier        | 1:37 500     | 2 December 2016         |
| Aus 111<br><b>Edition 3</b> | Australia - West Coast - Western Australia - Careening Bay and Approaches | 1:7 500      | 6 November 2015         |
|                             | Inset:  |              |                         |
|                             | Sulphur Bay   | 1:7 500      |                         |
| Aus 114<br><b>Edition 4</b> | Australia - West Coast - Western Australia - Kwinana                      | 1:12 500     | 6 November 2015         |
|                             | Inset:  |              |                         |
|                             | Kwinana Grain Jetty   | 1:12 500     |                         |

**515 AUSTRALIA - Products - New Charts and New Editions to be published shortly**
**Charts to be withdrawn without replacement in July 2019**

| <i>Chart</i>                | <i>Title</i>   | <i>Scale</i>              | <i>Publication Date</i> |
|-----------------------------|--|---------------------------|-------------------------|
| Aus 68<br><b>Edition 1</b>  | Australia - North West Coast - Western Australia - Approaches to Cape Preston<br>Inset:<br>Cape Preston              | 1:50 000<br><br>1:10 000  | 8 March 2013            |
| Aus 739<br><b>Edition 3</b> | Australia - North West Coast - Western Australia - Bedout Islet to Port Hedland                                      | 1:150 000                 | 15 January 2010         |
| Aus 740<br><b>Edition 3</b> | Australia - North West Coast - Western Australia - Port Hedland to Port Walcott<br>Inset:<br>Depuch Island Anchorage | 1:150 000<br><br>1:20 000 | 15 January 2010         |
| Aus 741<br><b>Edition 3</b> | Australia - North West Coast - Western Australia - Approaches to Dampier Archipelago                                 | 1:150 000                 | 6 November 2015         |

**Charts to be withdrawn without replacement in August 2019**

| <i>Chart</i>                | <i>Title</i>  | <i>Scale</i>                 | <i>Publication Date</i> |
|-----------------------------|---|------------------------------|-------------------------|
| Aus 243<br><b>Edition 2</b> | Australia - East Coast - Queensland - Approaches to Bundaberg   | 1:50 000                     | 6 January 2006          |
| Aus 280<br><b>Edition 5</b> | Australia - East Coast - Queensland - Plans in Queensland (Sheet 3)<br>Plans:<br>Magpie Reef to Eden Reef<br>Flinders Group | <br><br>1:75 000<br>1:50 000 | 22 February 2019        |
| Aus 281<br><b>Edition 3</b> | Australia - East Coast - Queensland - First Three Mile Opening to Cape Direction  | 1:75 000                     | 22 February 2019        |
| Aus 701<br><b>Edition 2</b> | Australia - North Coast - Queensland - Vrilya Point to Duyfken Point  | 1:150 000                    | 13 February 2009        |

## 516 AUSTRALIA - Products - New Charts, New Editions, Withdrawn Charts

Australian Hydrographic Office

### New Charts

| Chart   | Title and Geographical limits   | Scale     | Publication Date | Remarks  |
|---------|---|-----------|------------------|--|
| PNG 508 | Papua New Guinea - Brumer Islands to Goschen Strait<br>10° 04'·19 S – 11° 27'·70 S<br>150° 14'·41 E – 151° 07'·81 E | 1:150 000 | 31 May 2019      | Adoption of Papua New Guinea chart numbering. Replaces Aus 508. General updating throughout including latest bathymetric data and new submarine cable. |

### New Electronic Navigation Chart (Aus ENC)

| Cell Name | Title | Publication Date | Remarks |
|-----------|-------|------------------|---------|
| NIL       |       |                  |         |

### New Editions and Withdrawn Charts

| Chart                         | Title   | Scale                | Publication Date | Remarks   |
|-------------------------------|---|----------------------|------------------|---|
| Aus 51<br><b>(Edition 4)</b>  | Australia - North West Coast - Western<br>Australia - Broome                                | 1:10 000             | 31 May 2019      | New edition with general updating throughout; including latest bathymetric data.<br><b>Chart Aus 51 Edition 3 dated 28 July 2017 is now superseded and must be withdrawn from use.</b>  |
| Aus 207<br><b>(Edition 3)</b> | Australia - East Coast - New South Wales - Approaches to Newcastle<br>Inset:<br>Hexam Reach | 1:25 000<br>1:25 000 | 31 May 2019      | New edition with general updating throughout; including latest bathymetric data over the spoil ground, new Traffic Separation Scheme and Restricted Area limits.<br><b>Chart Aus 207 Edition 2 dated 21 July 2000 is now superseded and must be withdrawn from use.</b> |
| Aus 602<br><b>(Edition 2)</b> | International Chart Series - Australian Antarctic Territory - Approaches to Davis Anchorage | 1:12 500             | 31 May 2019      | New edition with general updating throughout; including latest bathymetric data.<br><b>Chart Aus 602 Edition 1 dated 21 March 2003 is now superseded and must be withdrawn from use.</b>  |

### Charts withdrawn

| Chart   | Remarks                             |
|---------|-------------------------------------|
| Aus 508 | On publication of new chart PNG 508 |

### Chart permanently withdrawn

Charts listed above as withdrawn no longer meet chart carriage requirements and should be marked as "superseded" and replaced with the new chart/ new edition listed prior to passage through the area covered by the new chart.

When placing orders with a chart agent between notice of forthcoming edition and its publication, mariners should advise whether their order pertains to the current edition or the new edition.

For further details refer to the AHO website at [www.hydro.gov.au](http://www.hydro.gov.au) for new edition and new chart stock arrival information.



**517 AUSTRALIA - NEW SOUTH WALES - Port Kembla - Depths**

Office of Environment and Heritage NSW

**Aus 194 [710/2018]**

|        |   |               |                |
|--------|---|---------------|----------------|
| Insert | depth, 18 <sub>g</sub> m, enclosed by contour | 34° 27'.931 S | 150° 57'.013 E |
|--------|---|---------------|----------------|

**Aus 195 [1003/2018]**

|        |   |               |                |
|--------|---|---------------|----------------|
| Insert | contour between   | 34° 27'.912 S | 150° 56'.975 E |
|        |   | 34° 27'.943 S | 150° 57'.020 E |
|        |   | 34° 27'.904 S | 150° 57'.024 E |
|        | depth, 13 <sub>g</sub> m, and extend contour E to enclose | 34° 29'.611 S | 150° 56'.407 E |

|        |                          |              |               |
|--------|--------------------------|--------------|---------------|
| Delete | contour between          | 34° 27'.91 S | 150° 56'.98 E |
|        |                          | 34° 27'.90 S | 150° 57'.02 E |
|        | depth, 17 <sub>g</sub> m | 34° 29'.59 S | 150° 56'.38 E |

**518 AUSTRALIA - QUEENSLAND - Abbott Point - Pilot boarding place**

Maritime Safety Queensland Notice 213/2019

**Aus 255 [1112/2018]**

|      |                      |               |                |
|------|----------------------|---------------|----------------|
| Move | pilot boarding place | 19° 48'.11 S  | 148° 03'.56 E  |
|      | to                   | 19° 47'.500 S | 148° 03'.500 E |

**Aus 826 [377/2019]**

|      |                      |              |               |
|------|----------------------|--------------|---------------|
| Move | pilot boarding place | 19° 48'.11 S | 148° 03'.56 E |
|      | to                   | 19° 47'.50 S | 148° 03'.50 E |

**519 AUSTRALIA - QUEENSLAND - Brisbane River - Luggage Point - Nav aids**

Maritime Safety Queensland

**Aus 237 [258/2019]**

|        |  |               |                |
|--------|--|---------------|----------------|
| Insert | light beacon, <i>Q.Bu (Q Day) No3F</i> , without topmark | 27° 22'.890 S | 153° 09'.351 E |
| Amend  | light to <i>Iso.Bu.2s (Iso.2s Day) No3R</i>              | 27° 22'.84 S  | 153° 09'.36 E  |
| Delete | dashed line, between                                     | 27° 22'.77 S  | 153° 09'.37 E  |
|        |  | 27° 22'.84 S  | 153° 09'.36 E  |
|        | light and topmark  | 27° 22'.77 S  | 153° 09'.37 E  |
|        | topmark  | 27° 22'.84 S  | 153° 09'.36 E  |

**520 AUSTRALIA - QUEENSLAND - Bundaberg - Light buoy**

Maritime Safety Queensland Notice 196/2019

**Aus 243 [1009/2018]**

|      |            |              |               |
|------|------------|--------------|---------------|
| Move | light buoy | 24° 40'.0 S  | 152° 30'.0 E  |
|      | to         | 24° 40'.09 S | 152° 29'.99 E |

**521 AUSTRALIA - QUEENSLAND - Cairns - Pilot boarding place**

Maritime Safety Queensland

**Aus 262 [147/2019]**

|      |                      |               |                |
|------|----------------------|---------------|----------------|
| Move | pilot boarding place | 16° 48'.10 S  | 145° 50'.10 E  |
|      | to                   | 16° 48'.599 S | 145° 50'.600 E |

**Aus 830 [149/2019]**

|      |                      |              |               |
|------|----------------------|--------------|---------------|
| Move | pilot boarding place | 16° 48'.10 S | 145° 50'.10 E |
|      | to                   | 16° 48'.60 S | 145° 50'.60 E |

**522 AUSTRALIA - QUEENSLAND - Cairns - Light buoys; anchorages**

Maritime Safety Queensland Notice 222/2019

**Aus 263 [378/2019]**

|               |                              |               |                |
|---------------|------------------------------|---------------|----------------|
| Insert        | dashed magenta line, between | 16° 56'.562 S | 145° 46'.802 E |
|               |                              | 16° 56'.588 S | 145° 46'.908 E |
|               | dashed magenta line, between | 16° 56'.434 S | 145° 47'.073 E |
|               |                              | 16° 56'.583 S | 145° 47'.056 E |
| Move          | light buoy<br>to             | 16° 55'.57 S  | 145° 47'.05 E  |
|               |                              | 16° 55'.577 S | 145° 47'.061 E |
|               | light buoy<br>to             | 16° 56'.53 S  | 145° 46'.88 E  |
|               |                              | 16° 56'.583 S | 145° 46'.919 E |
|               | light buoy<br>to             | 16° 56'.47 S  | 145° 47'.00 E  |
| 16° 56'.591 S | 145° 47'.041 E               |               |                |
| Delete        | dashed magenta line, between | 16° 56'.56 S  | 145° 46'.80 E  |
|               |                              | 16° 56'.53 S  | 145° 46'.88 E  |
|               |                              | 16° 56'.59 S  | 145° 46'.91 E  |
|               | dashed magenta line, between | 16° 56'.43 S  | 145° 47'.07 E  |
|               |                              | 16° 56'.47 S  | 145° 46'.99 E  |
| 16° 56'.58 S  | 145° 47'.06 E                |               |                |

**Aus 264 [378/2019]**

|              |                              |               |                |
|--------------|------------------------------|---------------|----------------|
| Insert       | dashed magenta line, between | 16° 56'.562 S | 145° 46'.802 E |
|              |                              | 16° 56'.588 S | 145° 46'.908 E |
|              | dashed magenta line, between | 16° 56'.434 S | 145° 47'.073 E |
|              |                              | 16° 56'.583 S | 145° 47'.056 E |
| Move         | light buoy<br>to             | 16° 56'.53 S  | 145° 46'.88 E  |
|              |                              | 16° 56'.583 S | 145° 46'.919 E |
|              | light buoy<br>to             | 16° 56'.47 S  | 145° 47'.00 E  |
|              |                              | 16° 56'.591 S | 145° 47'.041 E |
| Delete       | dashed magenta line, between | 16° 56'.56 S  | 145° 46'.80 E  |
|              |                              | 16° 56'.53 S  | 145° 46'.88 E  |
|              |                              | 16° 56'.59 S  | 145° 46'.91 E  |
|              | dashed magenta line, between | 16° 56'.43 S  | 145° 47'.07 E  |
|              |                              | 16° 56'.47 S  | 145° 46'.99 E  |
| 16° 56'.58 S | 145° 47'.06 E                |               |                |

**523 AUSTRALIA - QUEENSLAND - Curtis Island - Pilot boarding places**

Maritime Safety Queensland

**Aus 247 [152/2019]**

|      |                            |              |               |
|------|----------------------------|--------------|---------------|
| Move | pilot boarding place<br>to | 23° 24'.4 S  | 151° 00'.8 E  |
|      |                            | 23° 24'.39 S | 151° 00'.96 E |

**Aus 265 [53/2019]**

|      |                            |               |                |
|------|----------------------------|---------------|----------------|
| Move | pilot boarding place<br>to | 23° 24'.41 S  | 151° 00'.94 E  |
|      |                            | 23° 24'.389 S | 151° 00'.960 E |

**Aus 819 [152/2019]**

|      |                            |              |               |
|------|----------------------------|--------------|---------------|
| Move | pilot boarding place<br>to | 23° 43'.9 S  | 151° 21'.4 E  |
|      |                            | 23° 43'.79 S | 151° 21'.54 E |

**524 AUSTRALIA - QUEENSLAND - Gold Coast - Pilot boarding place**

Maritime Safety Queensland

**Aus 230 [1065/2018]**

|      |                            |               |                |
|------|----------------------------|---------------|----------------|
| Move | pilot boarding place<br>to | 27° 56'.09 S  | 153° 28'.24 E  |
|      |                            | 27° 56'.199 S | 153° 28'.200 E |

**Aus 814 [211/2019]**

|      |                            |              |               |
|------|----------------------------|--------------|---------------|
| Move | pilot boarding place<br>to | 27° 56'.09 S | 153° 28'.24 E |
|      |                            | 27° 56'.20 S | 153° 28'.20 E |

**525 AUSTRALIA - QUEENSLAND - Hervey Bay - Pilot boarding place**

Maritime Safety Queensland

**Aus 241 [768/2018]**

|      |                      |              |               |
|------|----------------------|--------------|---------------|
| Move | pilot boarding place | 25° 06'.8 S  | 152° 48'.5 E  |
|      | to                   | 25° 06'.96 S | 152° 48'.84 E |

**Aus 817 [207/2019]**

|      |                      |              |               |
|------|----------------------|--------------|---------------|
| Move | pilot boarding place | 25° 06'.8 S  | 152° 48'.5 E  |
|      | to                   | 25° 06'.96 S | 152° 48'.84 E |

**526 AUSTRALIA - QUEENSLAND - Hydrographers Passage - Depths**

LADS Flight

**Aus 821 [101/2019]**

|        |   |              |               |
|--------|---|--------------|---------------|
| Insert | depth, 9 <sub>3</sub> m, and extend contour N to enclose  | 19° 52'.10 S | 150° 17'.57 E |
|        | depth, 0 <sub>3</sub> m, enclosed by contour              | 19° 54'.69 S | 150° 14'.74 E |
|        | depth, 14 <sub>3</sub> m, enclosed by contour             | 19° 57'.63 S | 150° 18'.91 E |
|        | depth, 3 <sub>9</sub> m, and extend contour NW to enclose | 19° 59'.21 S | 150° 19'.81 E |
|        | depth, 15 <sub>3</sub> m, enclosed by contour             | 20° 14'.23 S | 150° 00'.24 E |

|         |  |             |              |
|---------|--|-------------|--------------|
| Replace | depth, 25 <sub>9</sub> m, with depth 3 <sub>1</sub> m, enclosed by contour | 19° 57'.2 S | 150° 19'.7 E |
|         | depth, 25m, with depth, 12 <sub>5</sub> m                                  | 19° 57'.7 S | 150° 19'.4 E |

|        |                          |             |              |
|--------|--------------------------|-------------|--------------|
| Delete | depth, 38m               | 19° 51'.9 S | 150° 17'.8 E |
|        | depth, 19 <sub>6</sub> m | 19° 52'.3 S | 150° 17'.5 E |
|        | depth, 4 <sub>2</sub> m  | 19° 59'.3 S | 150° 20'.1 E |

**Aus 824 [153/2019]**

|        |   |              |               |
|--------|---|--------------|---------------|
| Insert | depth, 15 <sub>3</sub> m, enclosed by contour | 20° 14'.23 S | 150° 00'.24 E |
|--------|---|--------------|---------------|

**527 AUSTRALIA - QUEENSLAND - Lucinda - Pilot boarding place**

Maritime Safety Queensland Notice 215/2019

**Aus 259 [260/2019]**

|      |                      |              |               |
|------|----------------------|--------------|---------------|
| Move | pilot boarding place | 18° 29'.91 S | 146° 23'.98 E |
|      | to                   | 18° 29'.00 S | 146° 25'.00 E |

**Aus 267 [260/2019]**

|      |                      |               |                |
|------|----------------------|---------------|----------------|
| Move | pilot boarding place | 18° 29'.91 S  | 146° 23'.98 E  |
|      | to                   | 18° 29'.000 S | 146° 25'.000 E |

**Aus 828 [260/2019]**

|      |                      |              |               |
|------|----------------------|--------------|---------------|
| Move | pilot boarding place | 18° 29'.91 S | 146° 23'.98 E |
|      | to                   | 18° 29'.00 S | 146° 25'.00 E |

**528 AUSTRALIA - QUEENSLAND - Mooloolaba - Pilot boarding place**

Maritime Safety Queensland

**Aus 235 [1117/2018]**

|      |                      |              |               |
|------|----------------------|--------------|---------------|
| Move | pilot boarding place | 26° 42'.9 S  | 153° 10'.7 E  |
|      | to                   | 26° 43'.00 S | 153° 10'.50 E |

**Aus 815 [954/2018]**

|      |                      |              |               |
|------|----------------------|--------------|---------------|
| Move | pilot boarding place | 26° 42'.9 S  | 153° 10'.7 E  |
|      | to                   | 26° 43'.00 S | 153° 10'.50 E |

**529 AUSTRALIA - QUEENSLAND - South Stradbroke Island - Light buoy**

Maritime Safety Queensland

**Aus 230 [524/2019]**

|        |   |               |                |
|--------|---|---------------|----------------|
| Insert | special light buoy, <i>Fl. Y. 4s</i> , with topmark | 27° 54'.938 S | 153° 27'.588 E |
|--------|---|---------------|----------------|

**Aus 814 [524/2019]**

|        |   |              |               |
|--------|---|--------------|---------------|
| Insert | special light buoy, <i>Fl. Y. 4s</i> , with topmark | 27° 54'.94 S | 153° 27'.59 E |
|--------|---|--------------|---------------|

**530 AUSTRALIA - QUEENSLAND - Stephens Islet to Skardon River - Pilot boarding places**

Maritime Safety Queensland

**Aus 293 [56/2019]**

|        |   |               |                |
|--------|---|---------------|----------------|
| Insert | pilot boarding place, with magenta legend <i>Thursday Island East</i> | 10° 33'.299 S | 142° 17'.300 E |
|--------|---|---------------|----------------|

|      |                            |               |                |
|------|----------------------------|---------------|----------------|
| Move | pilot boarding place<br>to | 10° 33'.906 S | 142° 04'.480 E |
|      |                            | 10° 33'.899 S | 142° 04'.400 E |

|        |                          |              |               |
|--------|--------------------------|--------------|---------------|
| Delete | depth, 12 <sub>2</sub> m | 10° 33'.93 S | 142° 04'.39 E |
|--------|--------------------------|--------------|---------------|

**Aus 294 [1009/2018]**

|        |                      |             |              |
|--------|----------------------|-------------|--------------|
| Delete | pilot boarding place | 10° 36'.3 S | 141° 49'.8 E |
|--------|----------------------|-------------|--------------|

**Aus 296 [1009/2018]**

|      |  |               |                |
|------|--|---------------|----------------|
| Move | pilot boarding place<br>to<br>pilot boarding place<br>to | 10° 33'.906 S | 142° 04'.480 E |
|      |  | 10° 33'.899 S | 142° 04'.400 E |
|      |  | 10° 36'.295 S | 141° 49'.796 E |
|      |  | 10° 35'.000 S | 141° 49'.144 E |

|        |  |              |               |
|--------|--|--------------|---------------|
| Delete | depth, 12 <sub>2</sub> m<br>depth, 12 <sub>7</sub> m | 10° 33'.93 S | 142° 04'.39 E |
|        |  | 10° 35'.00 S | 141° 49'.08 E |

**Aus 301 [376/2019]**

|        |                      |              |               |
|--------|----------------------|--------------|---------------|
| Insert | pilot boarding place | 11° 46'.32 S | 141° 55'.50 E |
|--------|----------------------|--------------|---------------|

|      |                            |              |               |
|------|----------------------------|--------------|---------------|
| Move | pilot boarding place<br>to | 10° 36'.30 S | 141° 49'.80 E |
|      |                            | 10° 35'.00 S | 141° 49'.14 E |

**Aus 377 [1074/2018]**

|        |   |             |               |
|--------|---|-------------|---------------|
| Insert | pilot boarding place, with magenta legend <i>Stephens Islet</i> | 9° 21'.91 S | 143° 39'.07 E |
|--------|---|-------------|---------------|

|      |                            |             |               |
|------|----------------------------|-------------|---------------|
| Move | pilot boarding place<br>to | 9° 34'.00 S | 143° 24'.50 E |
|      |                            | 9° 33'.91 S | 143° 24'.07 E |

**Aus 700 [1063/2018]**

|      |                            |              |               |
|------|----------------------------|--------------|---------------|
| Move | pilot boarding place<br>to | 10° 36'.30 S | 141° 49'.80 E |
|      |                            | 10° 35'.00 S | 141° 49'.14 E |

**Aus 701 [470/2019]**

|        |                      |              |               |
|--------|----------------------|--------------|---------------|
| Insert | pilot boarding place | 11° 46'.32 S | 141° 55'.50 E |
|--------|----------------------|--------------|---------------|

**Aus 840 [58/2019]**

|        |   |             |               |
|--------|---|-------------|---------------|
| Insert | pilot boarding place, with magenta legend <i>Stephens Islet</i> | 9° 21'.91 S | 143° 39'.07 E |
|--------|---|-------------|---------------|

|      |                            |             |               |
|------|----------------------------|-------------|---------------|
| Move | pilot boarding place<br>to | 9° 34'.00 S | 143° 24'.50 E |
|      |                            | 9° 33'.91 S | 143° 24'.07 E |

**531 AUSTRALIA - QUEENSLAND - Townsville - Pilot boarding place**

Maritime Safety Queensland Notice 214/2019

**Aus 256 [1122/2018]**

|      |                      |              |               |
|------|----------------------|--------------|---------------|
| Move | pilot boarding place | 19° 06'.57 S | 146° 54'.16 E |
|      | to                   | 19° 06'.00 S | 146° 54'.15 E |

**Aus 827 [1122/2018]**

|      |                      |              |               |
|------|----------------------|--------------|---------------|
| Move | pilot boarding place | 19° 06'.57 S | 146° 54'.16 E |
|      | to                   | 19° 06'.00 S | 146° 54'.15 E |

**532 PAPUA NEW GUINEA - Hood Point to Brumer Islands - Chart name**

Australian Hydrographic Office

**Aus 509 [472/2019]**

|       |  |             |              |
|-------|--|-------------|--------------|
| Amend | magenta legend to <i>Adjoining Chart PNG 508</i> in W border | 10° 47'.0 S | 151° 02'.4 E |
|-------|--|-------------|--------------|

**Aus 513 [472/2019]**

|       |  |             |              |
|-------|--|-------------|--------------|
| Amend | magenta legend to <i>Adjoining Chart PNG 508</i> in W border | 10° 08'.0 S | 151° 00'.5 E |
|-------|--|-------------|--------------|

**Aus 518 [472/2019]**

|       |  |             |              |
|-------|--|-------------|--------------|
| Amend | magenta legend to <i>Adjoining Chart PNG 508</i> in S border | 10° 08'.5 S | 150° 43'.0 E |
|-------|--|-------------|--------------|

**Aus 4620 (INT 620) [424/2019]**

|       |                                  |             |              |
|-------|----------------------------------|-------------|--------------|
| Amend | magenta legend to <i>PNG 508</i> | 11° 26'.5 S | 150° 20'.6 E |
|-------|----------------------------------|-------------|--------------|

**Aus 4621 (INT 621) [424/2019]**

|       |                                  |             |              |
|-------|----------------------------------|-------------|--------------|
| Amend | magenta legend to <i>PNG 508</i> | 11° 26'.5 S | 150° 22'.0 E |
|-------|----------------------------------|-------------|--------------|

**533 PAPUA NEW GUINEA - New Britain - Borgen Bay - Light beacon withdrawn**

National Maritime Safety Authority PNG

**Aus 386 [57/2019]**

|        |              |             |              |
|--------|--------------|-------------|--------------|
| Delete | light beacon | 05° 28'.3 S | 148° 34'.1 E |
|--------|--------------|-------------|--------------|

**534 PAPUA NEW GUINEA - Seeadler Harbour - Depth**HMAS *Shepparton***Aus 662 [445/2016]**

|         |  |             |               |
|---------|--|-------------|---------------|
| Replace | depth, 17 <sub>2</sub> m, with depth 11 <sub>9</sub> m | 1° 59'.99 S | 147° 22'.55 E |
|---------|--|-------------|---------------|

**535 PAPUA NEW GUINEA - Seeadler Harbour - Lombrum - Aeronautical light; radio tower**HMAS *Ararat***Aus 662 [534/2019]**

|        |                                    |              |                |
|--------|------------------------------------|--------------|----------------|
| Insert | radio tower with legend, <i>TR</i> | 2° 02'.360 S | 147° 22'.470 E |
|        | aeronautical light, <i>Aero R</i>  | 2° 03'.038 S | 147° 21'.615 E |

**Aus 662 (Lombrum Bay) [534/2019]**

|        |                                    |              |                |
|--------|------------------------------------|--------------|----------------|
| Insert | radio tower with legend, <i>TR</i> | 2° 02'.360 S | 147° 22'.470 E |
|--------|------------------------------------|--------------|----------------|

**536 AUSTRALIA - TORRES STRAIT - Great North East Channel - Depths**HMAS *Benalla* and HMAS *Shepparton***Aus 839 [1063/2018]**

|        |                    |             |              |
|--------|--------------------|-------------|--------------|
| Insert | accompanying block | 10° 11'.8 S | 142° 57'.9 E |
|--------|--------------------|-------------|--------------|

|                           |  |               |                |
|---------------------------|--|---------------|----------------|
| <b>537</b>                | <b>AUSTRALIA - WESTERN AUSTRALIA - Broome - Light beacon; rock</b>                                 |               |                |
|                           | Kimberley Ports Authority  |               |                |
| <b>Aus 50</b>             | [1019/2018]  |               |                |
| Replace                   | light beacon, with underwater rock enclosed by danger circle with legend, (1 <sub>2</sub> )        | 18° 00'.6 S   | 122° 12'.9 E   |
| <b>538</b>                | <b>AUSTRALIA - WESTERN AUSTRALIA - Carnarvon Jetty - Jetty ruined</b>                              |               |                |
|                           | Department of Transport WA Notice 9/2019   |               |                |
| <b>Aus 73 (Carnarvon)</b> | [110/2019]   |               |                |
| Insert                    | legend ( <i>ru</i> )   | 24° 53'.04 S  | 113° 37'.80 E  |
| <b>539</b>                | <b>AUSTRALIA - WESTERN AUSTRALIA - Geraldton - Light buoy</b>                                      |               |                |
|                           | Former Notice - 887(T)/2018 is cancelled   |               |                |
|                           | Mid West Ports   |               |                |
| <b>Aus 81</b>             | [217/2019]   |               |                |
| Amend                     | structure colour to R  | 28° 43'.88 S  | 114° 33'.24 E  |
| <b>540</b>                | <b>AUSTRALIA - WESTERN AUSTRALIA - Port Hedland - Aeronautical light; aeronautical radiobeacon</b> |               |                |
|                           | Pilbara Ports Authority  |               |                |
| <b>Aus 326</b>            | [218/2019]   |               |                |
| Delete                    | aeronautical light   | 20° 23'.0 S   | 118° 37'.7 E   |
| <b>Aus 740</b>            | [218/2019]   |               |                |
| Delete                    | aeronautical light   | 20° 23'.0 S   | 118° 37'.7 E   |
| <b>Aus 4071 (INT 71)</b>  | [430/2019]   |               |                |
| Delete                    | aeronautical radiobeacon   | 20° 23'.0 S   | 118° 37'.7 E   |
| <b>Aus 4603 (INT 603)</b> | [1017/2018]  |               |                |
| Delete                    | aeronautical radiobeacon   | 20° 23'.0 S   | 118° 37'.7 E   |
| <b>Aus 4722 (INT 722)</b> | [383/2019]   |               |                |
| Delete                    | aeronautical light   | 20° 23'.0 S   | 118° 37'.7 E   |
| <b>541</b>                | <b>AUSTRALIA - WESTERN AUSTRALIA - Port Walcott - Depths</b>                                       |               |                |
|                           | BMT  |               |                |
| <b>Aus 55</b>             | [524/2018]   |               |                |
| Insert                    | contour between  | 20° 35'.47 S  | 117° 10'.10 E  |
|                           |  | 20° 35'.42 S  | 117° 10'.12 E  |
|                           |  | 20° 35'.40 S  | 117° 10'.16 E  |
|                           | depth, 9 <sub>3</sub> m and extend contour E to enclose  | 20° 34'.81 S  | 117° 11'.93 E  |
| Delete                    | contour between  | 20° 35'.5 S   | 117° 10'.1 E   |
|                           |  | 20° 35'.5 S   | 117° 10'.2 E   |
|                           |  | 20° 35'.4 S   | 117° 10'.2 E   |
| <b>Aus 56</b>             | [200/2018]   |               |                |
| Insert                    | depth, 9 <sub>3</sub> m, enclosed by contour   | 20° 34'.809 S | 117° 11'.928 E |
|                           | depth, 4 <sub>9</sub> m, enclosed by contour   | 20° 35'.421 S | 117° 10'.123 E |
| Delete                    | depth, 11 <sub>8</sub> m   | 20° 34'.80 S  | 117° 11'.94 E  |

**542 AUSTRALIA - SOUTH AUSTRALIA - Port Adelaide - North Arm - Beacon; wreck**

Department of Planning, Transport and Infrastructure SA

**Aus 130 [477/2019]**

|        |                         |               |                |
|--------|-------------------------|---------------|----------------|
| Insert | beacon, without topmark | 34° 48'.740 S | 138° 32'.353 E |
|--------|-------------------------|---------------|----------------|

|      |       |               |                |
|------|-------|---------------|----------------|
| Move | wreck | 34° 48'.75 S  | 138° 32'.38 E  |
|      | to    | 34° 48'.742 S | 138° 32'.400 E |

**543 AUSTRALIA - TASMANIA - Mutton Bird Island - Rock**

I Johnston

**Aus 176 [195/2016]**

|        |   |               |                |
|--------|---|---------------|----------------|
| Insert | rock awash enclosed by danger circle, with legend <i>Rep (2019)</i> | 43° 25'.647 S | 145° 57'.010 E |
|--------|---|---------------|----------------|

**Aus 793 [966/2018]**

|        |   |              |               |
|--------|---|--------------|---------------|
| Insert | rock awash enclosed by danger circle, with legend <i>Rep (2019)</i> | 43° 25'.65 S | 145° 57'.01 E |
|--------|---|--------------|---------------|

**544(T)/2019 AUSTRALIA - QUEENSLAND - Airlie Beach - Muddy Bay - Light beacon unlit**  
Maritime Safety Queensland Notice 217(T)/2019

The light beacon, *Fl.G.2-5s No3* (20° 15'.72 S 148° 43'.65 E), is unlit.

**Chart temporarily affected - Aus 269**

**545(T)/2019 AUSTRALIA - QUEENSLAND - Brisbane River - Lytton and Quarantine Reach - Dredging operations complete**

*Former Notice - 1140(T)/2018* is cancelled  
Maritime Safety Queensland Notice 497(T)/2018

Cancel this notice on receipt.

**Chart formerly affected - Aus 237 - Aus 238**

**546(T)/2019 AUSTRALIA - QUEENSLAND - Cowley Beach to Ellison Reef - Military exercise**

Department of Defence

A military exercise will be conducted between Cowley Beach and Ellison Reef during the period 12 to 25 June 2019.

The exercise area is bounded by the coast and the following positions:

17° 46'.30 S 146° 06'.72 E  
17° 45'.20 S 146° 25'.60 E  
17° 41'.50 S 146° 25'.60 E  
17° 39'.00 S 146° 08'.95 E.

Mariners are advised to navigate with caution in the area.

**Chart temporarily affected - Aus 258 - Aus 829**

**547(T)/2019 AUSTRALIA - QUEENSLAND - Hay Point - Dredging operations completed**

*Former Notice - 272(T)/2019* is cancelled  
Maritime Safety Queensland Notices 94(T)/2019

Cancel this notice on receipt.

**Chart formerly affected - Aus 249 - Aus 250**

**548(P)/2019 AUSTRALIA - QUEENSLAND - Hydrographers Passage - Shoaling**

LADS Flight

Latest survey shows shoaler depths than those charted may exist in an area bounded by the following positions:

20° 36'.52 S 150° 04'.39 E  
20° 30'.63 S 150° 17'.03 E  
20° 23'.93 S 150° 16'.63 E  
20° 06'.15 S 150° 04'.79 E  
20° 11'.27 S 150° 00'.18 E  
20° 21'.88 S 150° 04'.70 E  
20° 27'.57 S 150° 09'.82 E  
20° 32'.65 S 150° 01'.91 E.

Mariners are advised to navigate with caution in the area.

Charts will be updated in due course.

**Chart which will be affected - Aus 821 - Aus 824**



**549(T)/2019 AUSTRALIA - QUEENSLAND - Magnetic Island - Scientific instrument recovered**

*Former Notice* - 341(T)/2019 is cancelled  
Maritime Safety Queensland

Cancel this notice on receipt.

**Chart formerly affected - Aus 256****550(T)/2019 AUSTRALIA - QUEENSLAND - Moreton Bay - Ship to ship transfer**

Maritime Safety Queensland Notice 236(T)/2019

Ship to ship transfer of LPG will be conducted at STS1 anchorage (27° 17'.17 S 153° 16'.57 E).

A 0.54M radius exclusion zone exists around transfer operations.

**Chart temporarily affected - Aus 236****551(T)/2019 AUSTRALIA - QUEENSLAND - Moreton Bay - King Island - Light beacon unlit**

Maritime Safety Queensland Notice 227(T)/2019

The light beacon, *Q.R* (27° 27'.08 S 153° 13'.75 E), is unlit.

**Chart temporarily affected - Aus 236****552(T)/2019 AUSTRALIA - QUEENSLAND - Moreton Island - Kounungai - Light beacon destroyed**

Maritime Safety Queensland Notice 229(T)/2019

The special light beacon, *Fl.Y.4s* (27° 17'.57 S 153° 23'.89 E) has been destroyed.

**Chart temporarily affected - Aus 236****553(T)/2019 AUSTRALIA - QUEENSLAND - Palm Beach - Artificial reef**

Maritime Safety Queensland Notice 232(T)/2019

Works to establish an artificial reef are in progress in the vicinity of position 28° 06'.45 S 153° 28'.26 E.

A barge and support vessels are on site.

An exclusion zone marked by special light buoys, *Q.Y*, exists around the works.

Mariners are advised to navigate with caution in the area.

**Chart temporarily affected - Aus 814****554(T)/2019 AUSTRALIA - QUEENSLAND - Rattlesnake Island - Live firing; military exercise**

*Former Notice* - 491(T)/2019 is cancelled  
Maritime Safety Queensland Notice 179(T)/2019, 244(T)/2019

Military exercises including live firing activities will be conducted within a 5M radius of position 19° 02'.45 S 146° 36'.72 E from 4 June to 21 June 2019.

Mariners are advised to navigate with caution and keep well clear of the area.

**Chart temporarily affected - Aus 256 - Aus 827****555(T)/2019 AUSTRALIA - QUEENSLAND - Shoalwater Bay - Live firing completed**

*Former Notice* - 492(T)/2019 is cancelled  
Maritime Safety Queensland Notice 178(T)/2019

Cancel this notice on receipt.

**Chart formerly affected - Aus 248 - Aus 367 - Aus 820**

**556(T)/2019 AUSTRALIA - QUEENSLAND - Townsville - Beacon replacement works**  
Maritime Safety Queensland Notice 240(T)/2019

Beacon replacement works are in progress in the vicinity of the following positions:  
19° 13'.17 S 146° 51'.03 E  
19° 14'.10 S 146° 50'.44 E  
19° 09'.39 S 146° 53'.00 E.

A barge and tug are on site and will monitor VHF Ch 12 and Ch 16.

Mariners are advised to navigate with caution in the area.

**Chart temporarily affected - Aus 256 - Aus 257**

**557(T)/2019 PAPUA NEW GUINEA - Isulailai Point - Light beacon unlit**  
*Former Notice - 447(T)/2019 is cancelled*  
National Maritime Safety Authority PNG Warning 17/2019

Cancel this notice on receipt.

**Chart formerly affected - Aus 508 - Aus 625**

**558(T)/2019 PAPUA NEW GUINEA - Isulailai Point - Light beacon unlit**  
National Maritime Safety Authority PNG Warning 17/2019

The light beacon, *Fl(2)5s 17m 9M* (10° 33'.63 S 150° 41'.71 E), is unlit.

**Chart temporarily affected - Aus 625 - PNG 508**

**559(T)/2019 AUSTRALIA - WESTERN AUSTRALIA - Barrow Island - Drill rig northwestwards**  
*Former Notice - 497(T)/2019 is cancelled*  
*MODU Development Driller 1*

Drill rig *Development Driller 1* is conducting drilling operations in position 20° 24'.43 S 114° 50'.82 E.

**Chart temporarily affected - Aus 328 - Aus 4723 (INT 723)**

**560(T)/2019 AUSTRALIA - WESTERN AUSTRALIA - Broome - Light beacon removed**  
*Former Notice - 292(T)/2019 is cancelled*  
Kimberley Ports Authority Notice 6/2019

A special light buoy, *Fl(2)5s* exists in approximate position 18° 00'.60 S 122° 12'.93 E.

An exclusion zone of 150m exists. Mariners are requested to contact Broome Port on VHF Ch 14 if there is a need to enter the exclusion zone.

Mariners are advised to navigate with caution in the area.

**Chart temporarily affected - Aus 50 - Aus 51**

**561(T)/2019 AUSTRALIA - WESTERN AUSTRALIA - Carnarvon - Teggs Channel - Shoaling**  
Department of Transport WA Notice 69/2019

Shoaling is occurring at the western end of Teggs Channel, extending northwards towards the centre of the channel in an area bounded by the following positions:

24° 54'.40 S 113° 37'.83 E  
24° 54'.36 S 113° 37'.96 E  
24° 54'.32 S 113° 37'.94 E  
24° 54'.36 S 113° 37'.81 E.

Mariners are advised to navigate with caution in the area.

**Chart temporarily affected - Aus 73**

**562(T)/2019 AUSTRALIA - WESTERN AUSTRALIA - Geraldton - Light buoy restored**

*Former Notice* - 192(T)/2019 is cancelled  
Mid West Ports

Cancel this notice on receipt.

**Chart formerly affected - Aus 81 - Aus 751**

**563(T)/2019 AUSTRALIA - WESTERN AUSTRALIA - Glomar Shoal - Drill rig westwards moved**

*Former Notice* - 454(T)/2019 is cancelled  
MODU *Ocean Apex*

Cancel this notice on receipt.

**Chart formerly affected - Aus 327 - Aus 4723 (INT 723)**

**564(T)/2019 AUSTRALIA - WESTERN AUSTRALIA - Montebello Islands - Drill rig northwestwards**

MODU *Ocean Apex*

Drill rig *Ocean Apex* is conducting drilling operations in position 19° 54'.79 S 115° 07'.92 E.

**Chart temporarily affected - Aus 328 - Aus 4723 (INT 723)**

**565(T)/2019 AUSTRALIA - WESTERN AUSTRALIA - Muiron Islands - FPSO on station northwestwards**

*Former Notice* - 424(T)/2018 is cancelled  
Woodside Energy Ltd

Cancel this notice on receipt.

**Chart formerly affected - Aus 328 - Aus 329 - Aus 744 - Aus 4723 (INT 723) - Aus 4725 (INT 725)**

**566(T)/2019 AUSTRALIA - WESTERN AUSTRALIA - Muiron Islands - Underwater operations completed**

*Former Notice* - 1042(T)/2018 is cancelled  
Blue Ocean Monitoring

Cancel this notice on receipt.

**Chart formerly affected - Aus 328 - Aus 744**

**567(T)/2019 AUSTRALIA - WESTERN AUSTRALIA - Port Hedland - Dredging operations**

Pilbara Ports Authority Notice PH 11(T)/2019

The dredge *Juan Sebastian De Elcano* and support vessels *Renegade*, *Amplitude* and *Seabus* are conducting dredging operations in the inner harbour, shipping channel, areas adjacent to the shipping channel and designated spoil grounds.

Vessels will display appropriate lights and shapes and will monitor VHF Ch 12 and Ch 16.

Mariners are advised to navigate with caution in the area.

**Chart temporarily affected - Aus 52 - Aus 53 - Aus 54**

**568(T)/2019 AUSTRALIA - WESTERN AUSTRALIA - Wyndham - Laffan Point - Light relit**

*Former Notice* - 300(T)/2019 is cancelled  
Department of Transport WA

Cancel this notice on receipt.

**Chart formerly affected - Aus 32**

**569(T)/2019 AUSTRALIA - SOUTH AUSTRALIA - Port Adelaide - Dredging operations; nav aids**

*Former Notice* - 198(T)/2019 is cancelled

Department of Planning, Transport and Infrastructure SA Notice 3/2019, 8/2019, 15/2019

Dredging works are underway to widen the Outer Channel and Turning Basin. The dredges Gateway and Magnor will operate continuously supported by tugs and barges. Nav aids marking the southern edge of the Entrance Channel, including leading light beacons in positions 34° 46'.71 S 138° 21'.59 E and 34° 46'.74 S 138° 21'.81 E, and north of the eastern Outer Harbor swing circle dredged limit are being removed.

Nav aids that have been removed may be replaced with Virtual Aids to Navigation or temporary buoys.

Mariners are advised to navigate with caution in the area.

**Chart temporarily affected - Aus 130 - Aus 137 - Aus 138 - Aus 781**

**570(T)/2019 AUSTRALIA - VICTORIA - Cape Conran - Drill rig southwestwards moved**

*Former Notice* - 89(T)/2019 is cancelled

Victorian Regional Channels Authority Notice 116/2019

Cancel this notice on receipt.

**Chart formerly affected - Aus 357 - Aus 487**

**571(T)/2019 AUSTRALIA - VICTORIA - Golden Beach - Scientific instruments**

Marine Safety Victoria Notice 103(T)/2019

Scientific instruments exist as follows:

| <i>Position</i>            | <i>Remarks</i>                     |
|----------------------------|------------------------------------|
| 38° 15'.40 S 147° 25'.48 E | special light buoy, <i>Fl.W.4s</i> |
| 38° 15'.38 S 147° 24'.97 E | 5m below surface                   |

Mariners are advised to navigate with caution in the area.

**Chart temporarily affected - Aus 357**

**572(T)/2019 AUSTRALIA - VICTORIA - Western Port - East Arm - Drill rig**

Victorian Regional Channels Authority Notice 116/2019

Drill rig *Ocean Monarch* is moored in position 38° 26'.3 S 145° 16'.5 E.

**Chart temporarily affected - Aus 150 - Aus 151 - Aus 801**

## HYDROGRAPHIC REPORTS

| <i>Locality</i>             | <i>Report</i> | <i>Ship/Authority</i> | <i>Observer</i> |
|-----------------------------|---------------|-----------------------|-----------------|
| TAS -<br>Mutton Bird Island | Rock          |                       | I Johnston      |

### III

#### **NAVIGATION WARNINGS**

The Australian Hydrographic Office will no longer compile Section III of the Australian Notices to Mariners. For the most up to date navigation warnings please refer to:

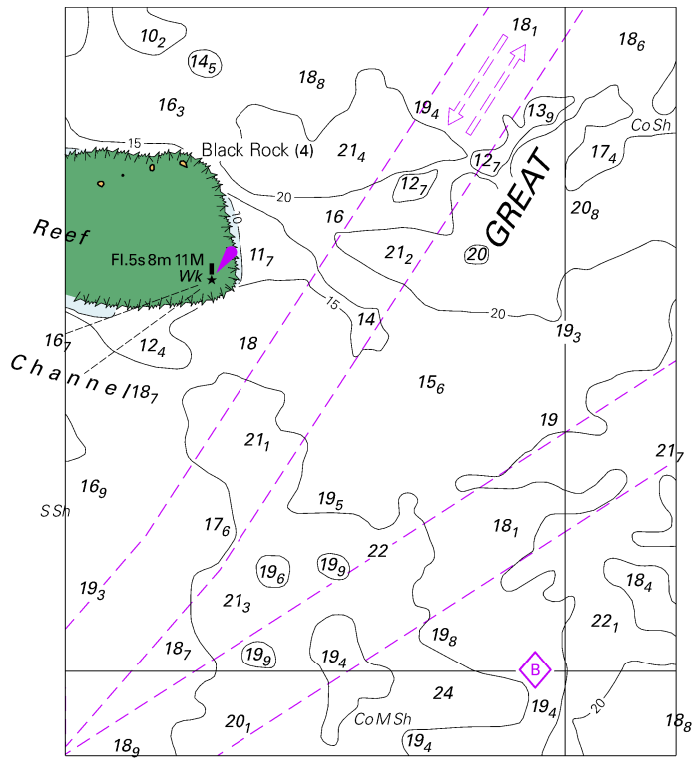
AMSA Navigation Warnings

<http://amsa.gov.au/search-and-rescue/distress-and-safety-comms/msi/msi-email/index.asp>

New Zealand Notices to Mariners (Navarea XIV warnings)

<http://www.linz.govt.nz/sea/maritime-safety/notices-mariners>

To accompany Australian Notice to Mariners 536/2019



© Commonwealth of Australia 2019

Block for chart Aus 839

(80.7 x 98.9mm)