



18 May 2018

Edition 10

AUSTRALIAN NOTICES TO MARINERS

Notices 381 - 430

Published fortnightly by the Australian Hydrographic Office



Australian Notices to Mariners are the authority for correcting charts and publications published by the Australian Hydrographic Office covering Australia, Papua New Guinea, Solomon Islands, Australian Antarctic Territory and Timor-Leste.

Commodore F.T. FREEMAN RAN
Hydrographer of Australia

SECTIONS.

- I. **Australian Notices to Mariners, including blocks and notes.**
- II. **Hydrographic Reports.**
- III. **Navigational Warnings.**

SUPPLEMENTS.

- I. **Tracings**
- II. **Cumulative List of Australian Notices to Mariners.**
- III. **Cumulative List of Temporary and Preliminary Australian Notices to Mariners.**
- IV. **Temporary and Preliminary Notices in force.**
- V. **Amendments to Admiralty List of Lights and Fog Signals (Vol K), Radio Signals (NP 281(2), 282, 283(2), 285, 286(4)) and Sailing Directions (NP 9, 13, 14, 15, 33, 34, 35, 36, 39, 44, 51, 60, 61, 62, 100, 136).**

© Commonwealth of Australia 2018

This work is copyright. Apart from any use permitted under the Copyright Act 1968, no part may be reproduced by any process, adapted, communicated or commercially exploited without prior written permission from The Commonwealth represented by the Australian Hydrographic Office.

IMPORTANT NOTICE

This edition of Notices to Mariners includes all significant information affecting AHO products which the AHO has become aware of since the last edition. All reasonable efforts have been made to ensure the accuracy and completeness of the information, including third party information, on which these updates are based. The AHO regards third parties from which it receives information as reliable, however the AHO cannot verify all such information and errors may therefore exist. The AHO does not accept liability for errors in third party information.

GENERAL INSTRUCTIONS

The substance of these notices should be inserted on the charts affected.

Bearings are referred to the true compass and are reckoned clockwise from North; those relating to lights are given as seen by an observer from seaward.

Positions quoted in notices relate to WGS84 which is the horizontal datum for all charts produced by the Australian Hydrographic Office.

The range quoted for a light is its nominal range.

Depths are with reference to the chart datum of each chart. Heights are above mean high water springs or mean higher high water, as appropriate.

The capital letter (P) or (T) after the number of any notice denotes a preliminary or temporary notice respectively, which are contained separately at the end of the permanent notices.

REPORTING OF DANGERS

Mariners are particularly requested to notify the AUSTRALIAN HYDROGRAPHIC OFFICE, Locked Bag 8801 Wollongong, NSW 2500 (Fax 02-4223 6599, e-mail datacentre@hydro.gov.au or, alternatively by filling in and submitting the [Hydrographic Notes](#) forms located on the web site – www.hydro.gov.au), immediately on the discovery of new dangers or suspected dangers to navigation. For changes or defects in aids to navigation notify AusSAR (Fax 02-6230 6868 or email rccaus@amsa.gov.au).

AUTHORISED USE

Copies of Australian notices are available free of charge from the Australian Hydrographic Office (AHO) website (www.hydro.gov.au) and through the eNotices (email) service (www.hydro.gov.au/enotices/enotices.htm).

Individual Notices may be copied for the purpose of inserting Notice substance on official charts and publications. Paper copies may be printed by chart agents and distributed to customers on a cost recovery basis. Participating chart agents are listed on the AHO website as providing a 'Paper Notices to Mariners' service (www.hydro.gov.au/webapps/jsp/agents/agents-list.jsp). Copies of the notices may not be sold for profit without prior written agreement.

NUMERICAL INDEX OF NOTICES TO MARINERS

Edition No 10

| Notices | Aus Chart, INT Chart, ENC Cell, AHP, BA Pubs |
|---------|--|
| 381 | Aus 255, SLB 102 |
| 382 | Aus 192 |
| 383 | Amendment to Australian National Tide Tables 2018 |
| 384 | Aus 196 |
| 385 | Aus 200, 203 |
| 386 | Aus 806 |
| 387 | Aus 270, 833 |
| 388 | Aus 238 |
| 389 | Aus 259, 267 |
| 390 | Aus 826 |
| 391 | Aus 4, 301 |
| 392 | Aus 520 |
| 393 | Aus 505, 621, 622 |
| 394 | Aus 314, 319 |
| 395 | Aus 58 |
| 396 | Aus 137 |
| 397 | Aus 139, 485, 777, 778, 780, 781 |
| 398 | Aus 357, 487, 802 |
| 399 | Aus 164 |
| 400(P) | Aus 200, 203 |
| 401(T) | Aus 301 |
| 402(T) | Aus 301 |
| 403(T) | Aus 301, 4060, 4603, 4620, 4720, INT 60, 603, 620, 720 |
| 404(T) | Aus 814, 815, 4602, 4635, 4643, INT 602, 635, 643 |
| 405(T) | Aus 270 |
| 406(T) | Aus 230 |
| 407(T) | Aus 250 |
| 408(T) | Aus 235, 236 |
| 409(T) | Aus 230, 814 |
| 410(T) | Aus 293, 299 |
| 411(T) | Aus 4 |
| 412(P) | Aus 506, 507, 623 |
| 413(T) | Aus 23, 722 |
| 414(T) | Aus 22, 309, 310, 722 |
| 415(T) | Aus 24, 25, 26, 309, 722 |
| 416(T) | Aus 26, 28 |
| 417(T) | Aus 26, 28, AX 00026T |
| 418(T) | Aus 326, 739, 4722, INT 722 |
| 419(T) | Aus 332 |
| 420(T) | Aus 319, 320 |
| 421(T) | Aus 58, 59 |
| 422(T) | Aus 319 |
| 423(T) | Aus 744, 745 |
| 424(T) | Aus 328, 329, 744, 4723, 4725, INT 723, 725 |
| 425(T) | Aus 327 |
| 426(T) | Aus 327 |
| 427(T) | Aus 126, 347, 780 |
| 428(T) | Aus 154 |
| 429(T) | Aus 150, 151 |
| 430(T) | Aus 790 |

NUMERICAL INDEX OF CHARTS AFFECTED

Edition No 10

| Aus Chart | Notices |
|-----------|-----------------------------|
| Aus 4 | 391, 411(T) |
| Aus 22 | 414(T) |
| Aus 23 | 413(T) |
| Aus 24 | 415(T) |
| Aus 25 | 415(T) |
| Aus 26 | 415(T), 416(T), 417(T) |
| Aus 28 | 416(T), 417(T) |
| Aus 58 | 395, 421(T) |
| Aus 59 | 421(T) |
| Aus 126 | 427(T) |
| Aus 137 | 396 |
| Aus 139 | 397 |
| Aus 150 | 429(T) |
| Aus 151 | 429(T) |
| Aus 154 | 428(T) |
| Aus 164 | 399 |
| Aus 192 | 382 |
| Aus 196 | 384 |
| Aus 200 | 385, 400(P) |
| Aus 203 | 385, 400(P) |
| Aus 230 | 406(T), 409(T) |
| Aus 235 | 408(T) |
| Aus 236 | 408(T) |
| Aus 238 | 388 |
| Aus 250 | 407(T) |
| Aus 255 | 381 |
| Aus 259 | 389 |
| Aus 267 | 389 |
| Aus 270 | 387, 405(T) |
| Aus 293 | 410(T) |
| Aus 299 | 410(T) |
| Aus 301 | 391, 401(T), 402(T), 403(T) |
| Aus 309 | 414(T), 415(T) |
| Aus 310 | 414(T) |
| Aus 314 | 394 |
| Aus 319 | 394, 420(T), 422(T) |
| Aus 320 | 420(T) |
| Aus 326 | 418(T) |
| Aus 327 | 425(T), 426(T) |
| Aus 328 | 424(T) |
| Aus 329 | 424(T) |
| Aus 332 | 419(T) |
| Aus 347 | 427(T) |
| Aus 357 | 398 |
| Aus 485 | 397 |
| Aus 487 | 398 |
| Aus 505 | 393 |
| Aus 506 | 412(P) |
| Aus 507 | 412(P) |
| Aus 520 | 392 |
| Aus 621 | 393 |
| Aus 622 | 393 |
| Aus 623 | 412(P) |
| Aus 722 | 413(T), 414(T), 415(T) |

| Aus Chart | Notices |
|-----------|----------------|
| Aus 739 | 418(T) |
| Aus 744 | 423(T), 424(T) |
| Aus 745 | 423(T) |
| Aus 777 | 397 |
| Aus 778 | 397 |
| Aus 780 | 397, 427(T) |
| Aus 781 | 397 |
| Aus 790 | 430(T) |
| Aus 802 | 398 |
| Aus 806 | 386 |
| Aus 814 | 404(T), 409(T) |
| Aus 815 | 404(T) |
| Aus 826 | 390 |
| Aus 833 | 387 |
| Aus 4060 | 403(T) |
| Aus 4602 | 404(T) |
| Aus 4603 | 403(T) |
| Aus 4620 | 403(T) |
| Aus 4635 | 404(T) |
| Aus 4643 | 404(T) |
| Aus 4720 | 403(T) |
| Aus 4722 | 418(T) |
| Aus 4723 | 424(T) |
| Aus 4725 | 424(T) |
| AX 00026T | 417(T) |
| SLB 102 | 381 |

| INT Chart | Notices |
|-----------|---------|
| INT 60 | 403(T) |
| INT 602 | 404(T) |
| INT 603 | 403(T) |
| INT 620 | 403(T) |
| INT 635 | 404(T) |
| INT 643 | 404(T) |
| INT 720 | 403(T) |
| INT 722 | 418(T) |
| INT 723 | 424(T) |
| INT 725 | 424(T) |

381 AUSTRALIA - Products- New Charts and New Editions to be published shortly

Australian Hydrographic Service

New Charts to be published shortly

| <i>Chart</i> | <i>Title</i> | <i>Scale</i> | <i>Expected Publication Date</i> | <i>Remarks</i> |
|--------------|--------------|--------------|----------------------------------|----------------|
| NIL | | | | |

New Editions to be published shortly

| <i>Chart</i> | <i>Title</i> | <i>Scale</i> | <i>Expected Publication Date</i> | <i>Remarks</i> |
|--------------|---|---|----------------------------------|---|
| SLB 102 | Plans in the New Georgia Group Plans: Gizo Harbour and Approaches Ringgi Cove Blackett Strait Lever Harbour Port Noro | 1:25 000 1:15 000 1:50 000 1:7 500 1:20 000 | 1st June 2018 | New Edition to incorporate latest bathymetric data. |
| AUS 255 | Approaches to Abbot Point Plan: Abbot Point Wharf | 1:25 000 1:12 500 | 1st June 2018 | New Edition to incorporate latest bathymetric data. |

382 AUSTRALIA - Products - New Charts, New Editions, Withdrawn Charts

Australian Hydrographic Office

New Charts

| <i>Chart</i> | <i>Title and Geographical limits</i> | <i>Scale</i> | <i>Publication Date</i> | <i>Remarks</i> |
|--------------|--------------------------------------|--------------|-------------------------|----------------|
| NIL | | | | |

New Electronic Navigation Chart (Aus ENC)

| <i>Cell Name</i> | <i>Title</i> | <i>Publication Date</i> | <i>Remarks</i> |
|------------------|--------------|-------------------------|----------------|
| NIL | | | |

New Editions and Withdrawn Charts

| <i>Chart</i> | <i>Title</i> | <i>Scale</i> | <i>Publication Date</i> | <i>Remarks</i> |
|------------------|--|--------------------------------|-------------------------|---|
| AUS 192 | Australia - East Coast - New South | | 18th May 2018 | New Edition to incorporate latest bathymetric data |
| Edition 3 | Wales - Twofold Bay Plans: Eden East Boyd Bay Wharves | 1:25 000 1:7 500 1:7 500 | | Chart Aus 192 Edition 2 dated 7 October 2016 is now superseded and must be withdrawn from use. |

Chart permanently withdrawn

Charts listed above as withdrawn no longer meet chart carriage requirements and should be marked as "superseded" and replaced with the new chart/ new edition listed prior to passage through the area covered by the new chart.

When placing orders with a chart agent between notice of forthcoming edition and its publication, mariners should advise whether their order pertains to the current edition or the new edition.

For further details refer to the AHS website at www.hydro.gov.au for new edition and new chart stock arrival information.

383 AUSTRALIA - Product - Amendment to Australian National Tide Tables 2018
 Australian Hydrographic Service

ANTT 2018

Page 359

Amend Broome To Chart Datum AU5050P0 ENC 0.0
Amend Broome To Chart Datum AUS 51 NE 28 Jul 2017 0.0
Amend Broome To Chart Datum AUS 50 NC 15 JAN 2010 0.0
Amend Broome To Chart Datum AUS 324 NE 13 AUG 2010 0.0
Amend Bunbury To Chart Datum AU5115P1 ENC ADD 0.1
Amend Bunbury To Chart Datum AUS 115 NE 25 MAR 2016 ADD 0.1
Amend Bunbury To Chart Datum AUS 755 NE 16 JAN 2009 ADD 0.1
Amend Bunbury To Chart Datum AUS 335 NE 02 JUL 2010 0.0
Amend Cape Domett To Chart Datum AU415128 ENC 0.0
Amend Cape Domett To Chart Datum AUS 32 NE 11 AUG 2017 0.0
Amend Cape Voltaire To Chart Datum AU415125 ENC 0.0
Amend Cape Voltaire To Chart Datum AUS 728 NC 07 SEP 2012 0.0
Amend Cape Voltaire To Chart Datum AUS 729 NC 07 FEB 2003 SUBTRACT 0.4
Amend Carnarvon To Chart Datum AU5073P2 ENC 0.0
Amend Carnarvon To Chart Datum AUS 73 NC 07 NOV 2008 0.0
Amend Carnarvon To Chart Datum AUS 331 NE 10 FEB 2017 0.0

Page360

Amend Dampier To Chart Datum AU5058P0 ENC 0.0
Amend Dampier To Chart Datum AUS 59 NE 23 OCT 2015 0.0
Amend Dampier To Chart Datum AUS 60 NE 02 DEC 2016 0.0
Amend Dampier To Chart Datum AUS 58 NE 02 DEC 2016 0.0
Amend Dampier To Chart Datum AUS 57 NE 01 AUG 2014 0.0
Amend Derby To Chart Datum AU418123 ENC 0.0
Amend Derby To Chart Datum AUS 45 NC 19 MAR 1999 0.0

Page 361

Amend Esperance To Chart Datum AU5119P1 ENC 0.0
Amend Esperance To Chart Datum AUS 119 NE 16 APR 2004 0.0
Amend Exmouth To Chart Datum AUS 744 NE 05 DEC 2014 0.0
Amend Exmouth To Chart Datum AUS 745 NE 07 SEP 2012 0.0
Amend Exmouth To Chart Datum AUS 329 NE 21 SEP 2012 0.0

383 AUSTRALIA - Product - Amendment to Australian National Tide Tables 2018

Page 362

Amend Honiara To Chart Datum SLB 101 NE 06 APR 2018 SUBTRACT 0.2

Page 363

Amend Lucinda To Chart Datum AUS 267 NE 09 MAR 2018 0.0

Page 366

Amend Thevenard Island To Chart Datum AUS 743 NC 05 DEC 2014 0.0*Amend* Thevenard Island To Chart Datum AUS 328 NC 05 DEC 2014 0.0*Amend* Townsville To Chart Datum AUS 257 NE 22 SEP 2017 SUBTRACT 0.1

Page 367

Amend Wyndham To Chart Datum AU5032P1 ENC 0.0*Amend* Wyndham To Chart Datum AUS 32 NE 11 AUG 2017 0.0**384 AUSTRALIA - NEW SOUTH WALES - Botany Bay - Yarra Point - Fish haven amended**

Port Authority of New South Wales

Aus 196 [94/2018]

| | | | |
|---------------|---------------------------|---------------|----------------|
| <i>Insert</i> | fish haven limit, between | 33° 58'.984 S | 151° 13'.431 E |
| | | 33° 58'.959 S | 151° 13'.492 E |
| | | 33° 58'.914 S | 151° 13'.419 E |
| | | 33° 58'.938 S | 151° 13'.373 E |
| | | 33° 58'.984 S | 151° 13'.431 E |
| <i>Delete</i> | fish haven limit, between | 33° 58'.97 S | 151° 13'.46 E |
| | | 33° 58'.96 S | 151° 13'.48 E |
| | | 33° 58'.92 S | 151° 13'.43 E |
| | | 33° 58'.95 S | 151° 13'.42 E |
| | | 33° 58'.97 S | 151° 13'.46 E |

385 AUSTRALIA - NEW SOUTH WALES - Port Jackson - Parramatta River - Depths; wrecks

Port Authority of New South Wales

Aus 200 (inset, Parramatta River) [312/2018]

| | | | |
|--------|--|---------------|----------------|
| Insert | depth, 10 ₈ m, enclosed by danger circle with legend Wk | 33° 50'.239 S | 151° 06'.599 E |
| | depth, 4 ₉ m, enclosed by danger circle with legend Wk | 33° 49'.938 S | 151° 06'.260 E |
| | depth, 1 ₉ m, enclosed by contour | 33° 49'.391 S | 151° 05'.643 E |
| | depth, 1 ₉ m, enclosed by contour | 33° 49'.295 S | 151° 05'.106 E |
| Delete | depth, 2 ₇ m | 33° 49'.40 S | 151° 05'.64 E |
| | depth, 2 ₉ m | 33° 49'.31 S | 151° 05'.11 E |
| | depth, 13 ₇ m | 33° 49'.95 S | 151° 06'.22 E |

Aus 203 [1008/2017]

| | | | |
|--------|--|---------------|----------------|
| Insert | depth, 1 ₉ m, and extend contour S to enclose | 33° 50'.158 S | 151° 06'.525 E |
| | depth, 10 ₈ m, enclosed by danger circle with legend Wk | 33° 50'.239 S | 151° 06'.599 E |
| | depth, 4 ₉ m, enclosed by danger circle with legend Wk | 33° 49'.938 S | 151° 06'.260 E |
| | depth, 1 ₉ m, enclosed by contour | 33° 49'.391 S | 151° 05'.643 E |
| | depth, 1 ₉ m, enclosed by contour | 33° 49'.295 S | 151° 05'.106 E |
| | depth, 1 ₆ m, and extend contour N to enclose | 33° 49'.322 S | 151° 04'.756 E |
| Delete | depth, 18 ₄ m | 33° 50'.24 S | 151° 06'.61 E |
| | depth, 2 ₇ m | 33° 49'.40 S | 151° 05'.64 E |
| | depth, 2 ₉ m | 33° 49'.31 S | 151° 05'.11 E |

386 AUSTRALIA - NEW SOUTH WALES - Twofold Bay - Lookout Point - Depth

Port Authority of New South Wales

Aus 806 [168/2017]

| | | | |
|--------|-----------------|--------------|---------------|
| Insert | contour between | 37° 04'.80 S | 149° 55'.19 E |
| | | 37° 05'.22 S | 149° 55'.20 E |
| Delete | contour between | 37° 04'.8 S | 149° 55'.2 E |
| | | 37° 05'.2 S | 149° 55'.2 E |

387 AUSTRALIA - QUEENSLAND - Aylen Patch - DepthsHMAS *Benalla* and HMAS *Shepparton***Aus 270 (plan, Cape Melville and Pipon Islets) [237/2018]**

| | | | |
|---------|---|-------------|--------------|
| Replace | depth, 9 ₃ m, with depth, 7 ₃ m | 14° 06'.1 S | 144° 28'.7 E |
|---------|---|-------------|--------------|

Aus 833 [895/2017]

| | | | |
|---------|---|--------------|---------------|
| Insert | depth, 22 ₇ m | 14° 03'.84 S | 144° 29'.11 E |
| Replace | depth, 9 ₃ m, with depth, 7 ₃ m | 14° 06'.1 S | 144° 28'.7 E |

388 AUSTRALIA - QUEENSLAND - Brisbane River - Quarries Reach - Light beacon withdrawn

Maritime Safety Queensland Notice 149/2018

Aus 238 [236/2018]

| | | | |
|--------|--------------|--------------|---------------|
| Delete | light beacon | 27° 26'.95 S | 153° 05'.47 E |
|--------|--------------|--------------|---------------|

389 AUSTRALIA - QUEENSLAND - Lucinda - Nav aids

Maritime Safety Queensland

Aus 259 [277/2018]

| | | | |
|--------|--|--------------|---------------|
| Insert | light, <i>F.RG & Oc.2s 5M</i> | 18° 31'.38 S | 146° 20'.66 E |
| | dashed line in a direction 066.4° for a distance of 300m, thence a continuous line for 8960m, with legend <i>Dir 246.4°</i> , emanating from light | 18° 31'.38 S | 146° 20'.66 E |
| Delete | light | 18° 31'.5 S | 146° 20'.1 E |
| | dashed and continuous line with legend 247.5°, emanating from light | 18° 31'.3 S | 146° 20'.1 E |
| | light | 18° 31'.4 S | 146° 20'.5 E |

Aus 267 [277/2018]

| | | | |
|--------|--|---------------|----------------|
| Insert | light, <i>F.RG & Oc.2s 5M</i> , with sectors | 18° 31'.379 S | 146° 20'.659 E |
| | Green 243° - 244.9° (1.9°) | | |
| | White 244.9° - 247.9° (3°) | | |
| | Red 247.9° - 249.9° (2°) | | |
| | dashed line in a direction 066.4° for a distance of 300m, thence a continuous line for 8960m, with legend <i>Dir 246.4°</i> , emanating from light | 18° 31'.379 S | 146° 20'.659 E |
| Delete | light | 18° 31'.55 S | 146° 20'.13 E |
| | dashed and continuous line with legend 247.5°, emanating from light | 18° 31'.35 S | 146° 20'.13 E |
| | light | 18° 31'.39 S | 146° 20'.54 E |

390 AUSTRALIA - QUEENSLAND - Upstart Bay - DepthsHMAS *Melville***Aus 826 [240/2018]**

| | | | |
|--------|----------------------|-------------|--------------|
| Insert | accompanying block A | 19° 43'.0 S | 147° 45'.0 E |
| | accompanying block B | 19° 59'.0 S | 147° 42'.0 E |

391 AUSTRALIA - QUEENSLAND - Weipa - Albatross Bay - Anchorages; pilot boarding place; port/pilotage limit; mooring buoy

Maritime Safety Queensland

Aus 4 [273/2018]

| | | | |
|--------|--|--------------|---------------|
| Insert | anchor berth, desig 1, with 0.5M radius swinging circle | 12° 45'.00 S | 141° 34'.10 E |
| | anchor berth, desig 2, with 0.5M radius swinging circle | 12° 45'.72 S | 141° 33'.12 E |
| | anchor berth, desig 3, with 0.5M radius swinging circle | 12° 46'.90 S | 141° 33'.20 E |
| | anchor berth, desig 4, with 0.5M radius swinging circle | 12° 47'.40 S | 141° 34'.30 E |
| | pilot boarding place with legend, <i>Amrun</i> | 12° 48'.90 S | 141° 34'.80 E |
| | magenta dashed line, with legend, <i>Amrun Port/Pilotage Limit</i> , between | 12° 52'.04 S | 141° 32'.53 E |
| | | 12° 50'.00 S | 141° 32'.48 E |
| | | 12° 50'.00 S | 141° 37'.60 E |

Aus 4 (plan, Port of Weipa) [273/2018]

| | | | |
|--------|---|--------------|---------------|
| Amend | legend, Emergency to <i>Emergency Anchorage</i> | 12° 41'.67 S | 141° 52'.93 E |
| Delete | lit mooring buoy | 12° 41'.76 S | 141° 53'.20 E |
| | anchor symbol | 12° 41'.67 S | 141° 53'.02 E |

Aus 301 [314/2018]

| | | | |
|--------|--|--------------|---------------|
| Insert | pilot boarding place with legend, <i>Amrun</i> | 12° 48'.90 S | 141° 34'.80 E |
| | magenta dashed line, with legend, <i>Amrun Port/Pilotage Limit</i> , between | 12° 50'.00 S | 141° 37'.60 E |
| | | 12° 50'.00 S | 141° 32'.48 E |
| | | 13° 00'.00 S | 141° 32'.73 E |
| | | 13° 00'.00 S | 141° 35'.07 E |

392 PAPUA NEW GUINEA - Cape Nelson - Preferred Route

National Maritime Safety Authority PNG

Aus 520 [598/2017]

| | | | |
|--------|--|------------------------------|--------------------------------|
| Insert | preferred route with legends <i>090°-270°</i> and <i>Preferred Route (see Note)</i> , between | 08° 58'.00 S 08° 58'.00 S | 149° 16'.49 E 148° 57'.94 E |
| Amend | bearing to <i>116°-296°</i> | 8° 58'.6 S | 149° 18'.1 E |
| Delete | preferred route, between | 08° 58'.2 S 08° 58'.2 S | 148° 58'.1 E 149° 16'.9 E |

393 PAPUA NEW GUINEA - Port Moresby - WrecksHMAS *Melville***Aus 505 [346/2018]**

| | | | |
|--------|--|--------------|---------------|
| Insert | depth, <i>20₃m</i> , enclosed by danger circle with legend, <i>Wk</i> | 09° 32'.99 S | 147° 10'.28 E |
|--------|--|--------------|---------------|

Aus 621 [346/2018]

| | | | |
|--------|--|---------------|----------------|
| Insert | depth, <i>20₃m</i> , enclosed by danger circle with legend, <i>Wk</i> | 09° 32'.993 S | 147° 10'.284 E |
| | depth, <i>5₃m</i> , enclosed by danger circle with legend, <i>Wk</i> | 09° 27'.943 S | 147° 08'.872 E |
| Delete | depth, <i>27₅m</i> | 09° 32'.99 S | 147° 10'.23 E |
| | depth, <i>9₁m</i> , enclosed by danger circle | 9° 27'.86 S | 147° 08'.90 E |
| | depth, <i>6₃m</i> | 9° 27'.95 S | 147° 08'.91 E |

Aus 622 [346/2018]

| | | | |
|--------|---|---------------|----------------|
| Insert | depth, <i>5₃m</i> , enclosed by danger circle with legend, <i>Wk</i> | 09° 27'.943 S | 147° 08'.872 E |
| | depth, <i>4₈m</i> , enclosed by danger circle with legend, <i>Wk</i> | 09° 27'.833 S | 147° 08'.921 E |
| Delete | wreck | 9° 27'.86 S | 147° 08'.90 E |
| | depth, <i>6₃m</i> | 9° 27'.81 S | 147° 08'.93 E |

Aus 622 (plan, Port Moresby and Napa Napa Wharves) [346/2018]

| | | | |
|--------|---|---------------|----------------|
| Insert | depth, <i>5₃m</i> , enclosed by danger circle with legend, <i>Wk</i> | 09° 27'.943 S | 147° 08'.872 E |
| | depth, <i>4₈m</i> , enclosed by danger circle with legend, <i>Wk</i> | 09° 27'.833 S | 147° 08'.921 E |
| Delete | wreck | 9° 27'.86 S | 147° 08'.90 E |

394 AUSTRALIA - WESTERN AUSTRALIA - Barracouta Shoal - Well northeastwards

Eni Australia Ltd

Aus 314 [728/2017]

| | | | |
|--------|------------------|--------------|---------------|
| Insert | well, centred on | 12° 15'.43 S | 124° 31'.37 E |
|--------|------------------|--------------|---------------|

Aus 319 [732/2017]

| | | | |
|--------|------------------|--------------|---------------|
| Insert | well, centred on | 12° 15'.43 S | 124° 31'.37 E |
|--------|------------------|--------------|---------------|

395 AUSTRALIA - WESTERN AUSTRALIA - Dampier - Mermaid Sound - Bearing

MMA Leveque

Aus 58 [200/2018]

| | | | |
|-------|-----------------------------------|--------------|---------------|
| Amend | bearing to <i>198.3° - 018.3°</i> | 20° 31'.68 S | 116° 43'.86 E |
| | bearing to <i>194.8° - 014.8°</i> | 20° 33'.32 S | 116° 42'.36 E |
| | bearing to <i>193° - 013°</i> | 20° 33'.26 S | 116° 43'.37 E |

396 AUSTRALIA - SOUTH AUSTRALIA - Port Adelaide - Berth

Flinders Ports

Aus 137 [156/2018]

| | | | |
|--------|----------------|---------------|----------------|
| Insert | berth desig, 4 | 34° 47'.980 S | 138° 30'.620 E |
|--------|----------------|---------------|----------------|

| | | | |
|--------|-----------------------|--------------|---------------|
| Delete | legend, Penrice Wharf | 34° 47'.96 S | 138° 30'.57 E |
|--------|-----------------------|--------------|---------------|

397 AUSTRALIA - SOUTH AUSTRALIA - Spencer Gulf to Gulf of St Vincent - Depths

LADS Flight

Aus 139 (plan, Macdonnell Sound) [155/2018]

| | | | |
|--------|--|--------------|---------------|
| Insert | depth, 13m, and extend contour SE to enclose | 35° 07'.89 S | 137° 52'.83 E |
| | depth, 8m, enclosed by contour | 35° 05'.58 S | 137° 53'.06 E |

Aus 485 [202/2018]

| | | | |
|--------|---------------------------------|--------------|---------------|
| Insert | depth, 8m, enclosed by contour | 33° 53'.02 S | 137° 12'.81 E |
| | depth, 12m | 33° 59'.62 S | 137° 06'.26 E |
| | depth, 12m, enclosed by contour | 35° 14'.26 S | 137° 24'.09 E |

| | | | |
|---------|-----------------------------|-------------|--------------|
| Replace | depth, 19m, with depth, 17m | 34° 00'.3 S | 136° 59'.3 E |
|---------|-----------------------------|-------------|--------------|

| | | | |
|--------|------------|-------------|--------------|
| Delete | depth, 10m | 33° 52'.7 S | 137° 12'.9 E |
| | depth, 13m | 33° 59'.3 S | 137° 07'.4 E |

Aus 777 [102/2018]

| | | | |
|--------|---|--------------|---------------|
| Insert | out of position depth, 12m, enclosed by contour | 33° 50'.22 S | 137° 09'.51 E |
| | depth, 13m, enclosed by contour | 33° 51'.59 S | 137° 08'.24 E |
| | depth, 12m, enclosed by contour | 33° 51'.64 S | 137° 11'.35 E |
| | depth, 8m, enclosed by contour | 33° 53'.02 S | 137° 12'.81 E |
| | depth, 14m enclosed by contour | 33° 55'.31 S | 137° 08'.81 E |
| | depth, 12m, and extend contour S to enclose | 33° 59'.62 S | 137° 06'.26 E |

| | | | |
|---------|-----------------------------|-------------|--------------|
| Replace | depth 15m, with depth, 12m | 33° 51'.4 S | 137° 14'.7 E |
| | depth, 13m, with depth, 12m | 33° 54'.7 S | 137° 04'.7 E |
| | depth, 19m, with depth, 17m | 34° 00'.3 S | 136° 59'.3 E |

| | | | |
|--------|------------|-------------|--------------|
| Delete | depth, 10m | 33° 52'.7 S | 137° 12'.9 E |
|--------|------------|-------------|--------------|

Aus 778 [865/2017]

| | | | |
|--------|---------------------------------|--------------|---------------|
| Insert | depth, 12m, enclosed by contour | 33° 50'.22 S | 137° 09'.51 E |
| | depth, 13m, enclosed by contour | 33° 51'.59 S | 137° 08'.24 E |
| | depth, 12m, enclosed by contour | 33° 51'.64 S | 137° 11'.35 E |
| | depth, 12m | 33° 51'.37 S | 137° 14'.66 E |
| | depth, 8m, enclosed by contour | 33° 53'.02 S | 137° 12'.81 E |

| | | | |
|--------|------------|-------------|--------------|
| Delete | depth, 10m | 33° 52'.7 S | 137° 12'.9 E |
| | depth, 13m | 33° 51'.1 S | 137° 15'.0 E |

Aus 780 [202/2018]

| | | | |
|--------|--|--------------|---------------|
| Insert | depth, 12m, enclosed by contour | 35° 14'.26 S | 137° 24'.09 E |
| | depth, 13m, and extend contour SE to enclose | 35° 07'.89 S | 137° 52'.83 E |

Aus 781 [155/2018]

| | | | |
|--------|--|--------------|---------------|
| Insert | depth, 13m, and extend contour SE to enclose | 35° 07'.89 S | 137° 52'.83 E |
| | depth, 9m, enclosed by contour | 34° 36'.07 S | 138° 09'.11 E |

398 AUSTRALIA - VICTORIA - Wilsons Promontory - Depths

Australian Hydrographic Office

Aus 357 [353/2018]

| | | | |
|---------|--|--------------|---------------|
| Insert | depth, 29 ₃ m, enclosed by contour | 39° 08'.12 S | 146° 20'.40 E |
| | depth, 18 ₆ m, enclosed by contour | 39° 08'.78 S | 146° 22'.24 E |
| Replace | depth, 63m, with depth, 49m and extend contour SE to enclose | 39° 09'.1 S | 146° 20'.8 E |

Aus 487 [69/2018]

| | | | |
|--------|---------------------------------|--------------|---------------|
| Insert | depth, 27m, enclosed by contour | 39° 04'.77 S | 146° 15'.87 E |
| Delete | depth, 38m | 39° 04'.4 S | 146° 15'.4 E |

Aus 802 [1083/2017]

| | | | |
|---------|---|--------------|---------------|
| Insert | depth, 17 ₁ m, enclosed by contour | 39° 03'.50 S | 146° 18'.30 E |
| | depth, 24 ₄ m, enclosed by contour | 39° 03'.93 S | 146° 17'.58 E |
| | depth, 27 ₆ m, enclosed by contour | 39° 04'.11 S | 146° 15'.96 E |
| | depth, 27m, enclosed by contour | 39° 04'.77 S | 146° 15'.87 E |
| | depth, 29 ₃ m, enclosed by contour | 39° 08'.12 S | 146° 20'.40 E |
| | depth, 16 ₆ m, enclosed by contour | 39° 04'.72 S | 146° 26'.57 E |
| | depth, 19 ₃ m, enclosed by contour | 39° 04'.07 S | 146° 27'.41 E |
| Replace | depth, 54m, with depth, 44m enclosed by contour | 39° 09'.8 S | 146° 19'.3 E |
| | depth, 63m, with depth, 49m and extend contour SE to enclose | 39° 09'.1 S | 146° 20'.8 E |
| | depth, 25 ₆ m, with depth, 18 ₆ m | 39° 08'.8 S | 146° 22'.2 E |
| | depth, 25m, with depth, 18 ₄ m enclosed by contour | 39° 07'.2 S | 146° 25'.7 E |
| | depth, 25 ₁ m, with depth, 15m enclosed by contour | 39° 04'.1 S | 146° 18'.8 E |

399 AUSTRALIA - TASMANIA - Devonport - Dredged area

Marine and Safety Tasmania Notice 84/2018

Aus 164 (plan, Devonport) [106/2018]

| | | | |
|--------|---------------------|--------------|---------------|
| Delete | dashed line between | 41° 11'.02 S | 146° 21'.80 E |
| | | 41° 10'.93 S | 146° 21'.83 E |
| | legend 8·9m | 41° 10'.98 S | 146° 21'.80 E |

400(P)/2018 AUSTRALIA - NEW SOUTH WALES - Port Jackson - Parramatta River - Shoaling
Port Authority of New South Wales

Latest survey shows shoaler depths than those charted may exist upstream of Archer Point (34° 49'.18 S 151° 04'.40 E).

Mariners are advised to navigate with caution in the area.

Charts will be updated in due course.

Chart which will be affected - Aus 200 - Aus 203

401(T)/2018 AUSTRALIA - QUEENSLAND - Boyd Point - Scientific instruments recovered
Former Notice - 1005(T)/2015 is cancelled
Maritime Safety Queensland

Cancel this notice on receipt.

Chart formerly affected - Aus 301

402(T)/2018 AUSTRALIA - QUEENSLAND - Boyd Point - Mooring buoys recovered
Former Notice - 746(T)/2017 is cancelled
Maritime Safety Queensland

Cancel this notice on receipt.

Chart formerly affected - Aus 301

403(T)/2018 AUSTRALIA - QUEENSLAND - Boyd Point - Mooring buoys
Maritime Safety Queensland Notice 137(T)/2018

Lit mooring buoys, *Fl.Y.5s*, exist in positions 12° 54'.07 S 141° 38'.86 E and 12° 54'.17 S 141° 38'.72 E.

Mariners are advised to navigate with caution in the area.

Chart temporarily affected - Aus 301 - Aus 4060 (INT 60) - Aus 4603 (INT 603) - Aus 4620 (INT 620) - Aus 4720 (INT 720)

404(T)/2018 AUSTRALIA - QUEENSLAND - Cape Moreton - Subsea operations complete
Former Notice - 360(T)/2018 is cancelled
Australian Maritime Safety Authority

Cancel this notice on receipt.

Chart formerly affected - Aus 814 - Aus 815 - Aus 4602 (INT 602) - Aus 4635 (INT 635) - Aus 4643 (INT 643)

405(T)/2018 AUSTRALIA - QUEENSLAND - Cooktown - Light buoys unlit
Maritime Safety Queensland

The port lateral light buoy, *Fl.R.2·5s No2* (15° 27'.22 S 145° 15'.36 E) and the starboard lateral light buoy, *Fl.G.2·5s No1* (15° 27'.20 S 145° 15'.33 E) are unlit.

Chart temporarily affected - Aus 270

406(T)/2018 AUSTRALIA - QUEENSLAND - Gold Coast Seaway to Narrowneck Reef - Dredging operations
Maritime Safety Queensland

The dredge *Faucon* is conducting dredging operations between Gold Coast Seaway (27° 56'.2 S 153° 26'.1 E) and Narrowneck Reef (27° 59'.2 S 153° 26'.0 E) within 1.5M of the coast .

Vessel will monitor VHF Ch 16.

Mariners are advised to navigate with caution in the area.

Chart temporarily affected - Aus 230

407(T)/2018 AUSTRALIA - QUEENSLAND - Mackay Harbour - Harbour works completed

Former Notice - 752(T)/2017 is cancelled

Maritime Safety Queensland

Cancel this notice on receipt.

Chart formerly affected - Aus 250

408(T)/2018 AUSTRALIA - QUEENSLAND - Moreton Bay - Spitfire Channel - Scientific instruments

Maritime Safety Queensland

Subsurface scientific instruments marked by special light buoys, *Fl.Y.4.5s*, exist in the following positions:

27° 06'.00 S 153° 15'.60 E

27° 02'.13 S 153° 16'.77 E.

Chart temporarily affected - Aus 235 - Aus 236

409(T)/2018 AUSTRALIA - QUEENSLAND - Palm Beach to Gold Coast - Dredging operations complete

Former Notice - 471(T)/2017 is cancelled

Maritime Safety Queensland

Cancel this notice on receipt.

Chart formerly affected - Aus 230 - Aus 814

410(T)/2018 AUSTRALIA - QUEENSLAND - Torres Strait - Horn Island - Light unlit

Maritime Safety Queensland NTM 154(T)/2018

The light, *F&Iso.WRG* (10° 36'.17 S 142° 14'.40 E) is unlit.

Chart temporarily affected - Aus 293 - Aus 299

411(T)/2018 AUSTRALIA - QUEENSLAND - Weipa - Hey River - Exclusion zone

Former Notice - 840(T)/2017 is cancelled

Maritime Safety Queensland

Vessel *Jumbo Jubilee* is conducting transshipment operations in position 12° 44'.72 S 141° 53'.99 E.

A 350m exclusion zone exists.

Chart temporarily affected - Aus 4

412(P)/2018 PAPUA NEW GUINEA - Batumata Point - Shoaling

LADS Flight

Latest survey shows shoaler depths than those charted may exist in and around the islands and reefs in the area between Galovi (Howard) Reef (10° 11'.1 S 148° 08'.7 E) and Eunoro Island (10° 23'.6 S 149° 27.3 E).

Mariners are advised to navigate with caution in the area.

Charts will be updated in due course.

Chart which will be affected - Aus 506 - Aus 507 - Aus 623

413(T)/2018 AUSTRALIA - NORTHERN TERRITORY - Apsley Strait - Light buoy off station

Department of Infrastructure, Planning and Logistics NT Coastal Notice 1(T)/2018

The port lateral light buoy, *Fl.R.4s* (11° 45'.85 S 130° 39'.80 E), is off station.

Chart temporarily affected - Aus 23 - Aus 722

414(T)/2018 AUSTRALIA - NORTHERN TERRITORY - Bathurst Island - Survey and drilling operations

ConocoPhillips Australia

The vessel *Skandi Hercules* is conducting survey and drilling operations in an area bounded by the following positions:

9° 46'.2 S 130° 07'.9 E
 10° 42'.6 S 130° 14'.6 E
 11° 05'.9 S 129° 58'.4 E
 11° 18'.8 S 129° 55'.9 E
 12° 03'.4 S 129° 53'.5 E
 12° 03'.8 S 129° 55'.5 E
 11° 43'.0 S 129° 59'.0 E
 11° 16'.9 S 130° 00'.1 E
 11° 05'.9 S 130° 07'.9 E
 9° 46'.1 S 130° 30'.3 E.

Vessel will display appropriate lights and shapes and monitor VHF Ch 16.

Mariners are advised to navigate with caution in the area. 2M clearance requested.

Chart temporarily affected - Aus 22 - Aus 309 - Aus 310 - Aus 722

415(T)/2018 AUSTRALIA - NORTHERN TERRITORY - Darwin - Emery Point - Light relit*Former Notice* - 256(T)/2018 is cancelled

Department of Infrastructure, Planning and Logistics NT

Cancel this notice on receipt.

Chart formerly affected - Aus 24 - Aus 25 - Aus 26 - Aus 309 - Aus 722

416(T)/2018 AUSTRALIA - NORTHERN TERRITORY - Darwin - Preston Point - Light unlit*Former Notice* - 257(T)/2018 is cancelled

Department of Infrastructure, Planning and Logistics NT Notice 24(T)/2018

The light, *F.Bu & Fl.Y.2s L01A* (12° 30'.61 S 130° 53'.76 E) is unlit.

Chart temporarily affected - Aus 26 - Aus 28

417(T)/2018 AUSTRALIA - NORTHERN TERRITORY - Darwin - East Arm - Scientific instruments recovered*Former Notice* - 893(T)/2015 is cancelled

Department of Infrastructure, Planning and Logistics NT Notice 21(T)/2018

Cancel this notice on receipt.

Chart formerly affected - Aus 26 - Aus 28 - AX 00026T

418(T)/2018 AUSTRALIA - WESTERN AUSTRALIA - Bedout Islet - Drill rig northwestwards
 Quadrant Energy

Drill rig *ENSCO 107* is conducting drilling operations in position 19° 02'.01 S 118° 44'.03 E.

Chart temporarily affected - Aus 326 - Aus 739 - Aus 4722 (INT 722)

419(T)/2018 AUSTRALIA - WESTERN AUSTRALIA - Bluff Point - Fish aggregating devices recovered
Former Notice - 214(T)/2016 is cancelled
 Department of Transport WA

Cancel this notice on receipt.

Chart formerly affected - Aus 332

420(T)/2018 AUSTRALIA - WESTERN AUSTRALIA - Browse Island - Mooring buoy northwestwards
 Go Offshore

A yellow mooring buoy exists in position 14° 01'.10 S 123° 17'.09 E.

Chart temporarily affected - Aus 319 - Aus 320

421(T)/2018 AUSTRALIA - WESTERN AUSTRALIA - Dampier - Facilities Channel - Light relit
Former Notice - 336(T)/2018 is cancelled
 Pilbara Ports Authority

Cancel this notice on receipt.

Chart formerly affected - Aus 58 - Aus 59

422(T)/2018 AUSTRALIA - WESTERN AUSTRALIA - Eugene McDermott Shoal - Drilling operations completed
Former Notice - 220(T)/2018 is cancelled
 Australian Maritime Safety Authority

Cancel this notice on receipt.

Chart formerly affected - Aus 319

423(T)/2018 AUSTRALIA - WESTERN AUSTRALIA - Exmouth Gulf - Scientific instruments
 Subsea 7 , Department of Transport WA Notice 80/2018

Special light buoys, *Fl.Y.3s*, exist in positions 22° 12'.36 S 114° 10'.17 E and 21° 58'.80 S 114° 18'.55 E.

Chart temporarily affected - Aus 744 - Aus 745

424(T)/2018 AUSTRALIA - WESTERN AUSTRALIA - Muiron Islands - FPSO off station northwestwards
 Woodside Energy Ltd

The FPSO *Ngujima-Yin* (21° 26'.03 S 114° 04'.02 E) is off station; an obstruction with least depth 50m exists in situ.

Chart temporarily affected - Aus 328 - Aus 329 - Aus 744 - Aus 4723 (INT 723) - Aus 4725 (INT 725)

425(T)/2018 AUSTRALIA - WESTERN AUSTRALIA - Rankin Bank - Subsea operations
SPV Island Performer, Australian Maritime Safety Authority Auscoast Warning 103/2018

Vessel *Island Performer* is conducting subsea operations in an area bounded by the following positions:

19° 44'.1 S 115° 50'.2 E
 19° 42'.3 S 115° 48'.8 E
 19° 49'.7 S 115° 38'.4 E
 19° 51'.0 S 115° 39'.4 E.

Vessel will monitor VHF CH 16.

Mariners are advised to navigate with caution. 2.5M clearance requested.

Chart temporarily affected - Aus 327

426(T)/2018 AUSTRALIA - WESTERN AUSTRALIA - Rankin Bank - Cable operations complete
Former Notice - 303(T)/2018 is cancelled
 Australian Maritime Safety Authority

Cancel this notice on receipt.

Chart formerly affected - Aus 327

427(T)/2018 AUSTRALIA - SOUTH AUSTRALIA - Backstairs Passage - Cable operations
 Fugro, Department of Planning, Transport and Infrastructure SA Notice 13/2018

On or about 27 May, Vessel *Southern star* is conducting submarine cable laying operations between the following positions:

35° 43'.8 S 138° 00'.5 E
 35° 44'.7 S 138° 02'.1 E
 35° 38'.5 S 138° 07'.7 E
 35° 37'.5 S 138° 06'.1 E.

Mariners are advised to navigate with caution in the area. 500m clearance requested.

Chart temporarily affected - Aus 126 - Aus 347 - Aus 780

428(T)/2018 AUSTRALIA - VICTORIA - Port Phillip - Webb Dock - Light beacons unlit
 Victorian Ports Corporation (Melbourne) Notice 175(T)/2018

The following light beacons are unlit:

| <i>Characteristic</i> | <i>Position</i> |
|--------------------------------|----------------------------|
| <i>F.R & Fl.R.5s No84</i> | 37° 50'.89 S 144° 54'.45 E |
| <i>F.R & Fl.R.5s No82</i> | 37° 50'.98 S 144° 54'.47 E |
| <i>F.G & Iso.G.4s No23</i> | 37° 50'.97 S 144° 54'.42 E |

Chart temporarily affected - Aus 154

429(T)/2018 AUSTRALIA - VICTORIA - Western Port - Flinders Bight - Light buoy relit
Former Notice - 133(T)/2018 is cancelled
 Parks Victoria Notice 165/2018

Cancel this notice on receipt.

Chart formerly affected - Aus 150 - Aus 151

430(T)/2018 AUSTRALIA - TASMANIA - Hunter Island - Scientific instrument
 Marine and Safety Tasmania Notice M88/2018

A subsurface scientific instrument exists in position 40° 29'.18 S 144° 48'.76 E.

Chart temporarily affected - Aus 790

II

HYDROGRAPHIC REPORTS

NIL

III

NAVIGATION WARNINGS

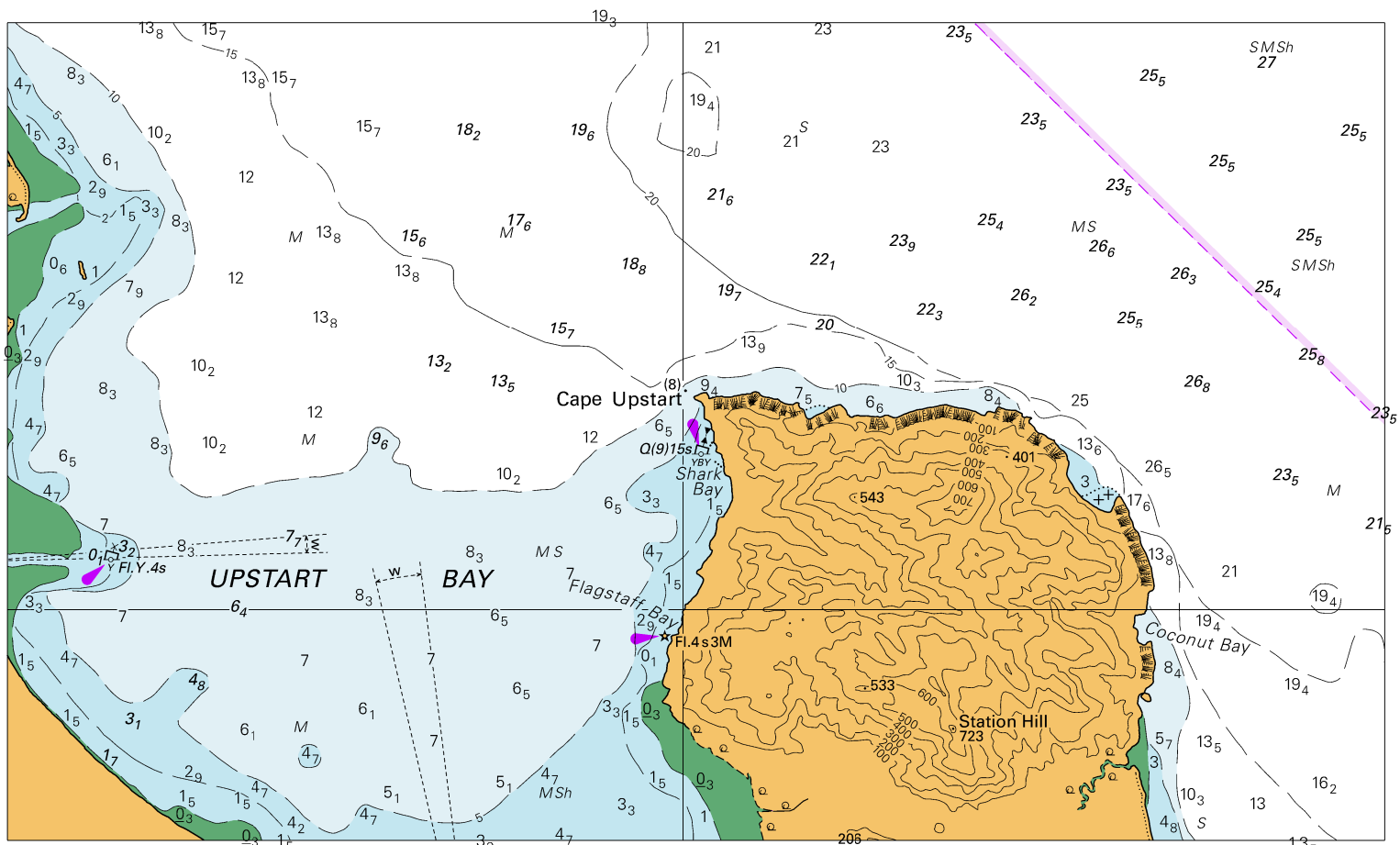
The Australian Hydrographic Office will no longer compile Section III of the Australian Notices to Mariners. For the most up to date navigation warnings please refer to:

AMSA Navigation Warnings

<http://amsa.gov.au/search-and-rescue/distress-and-safety-comms/msi/msi-email/index.asp>

New Zealand Notices to Mariners (Navarea XIV warnings)

<http://www.linz.govt.nz/sea/maritime-safety/notices-mariners>

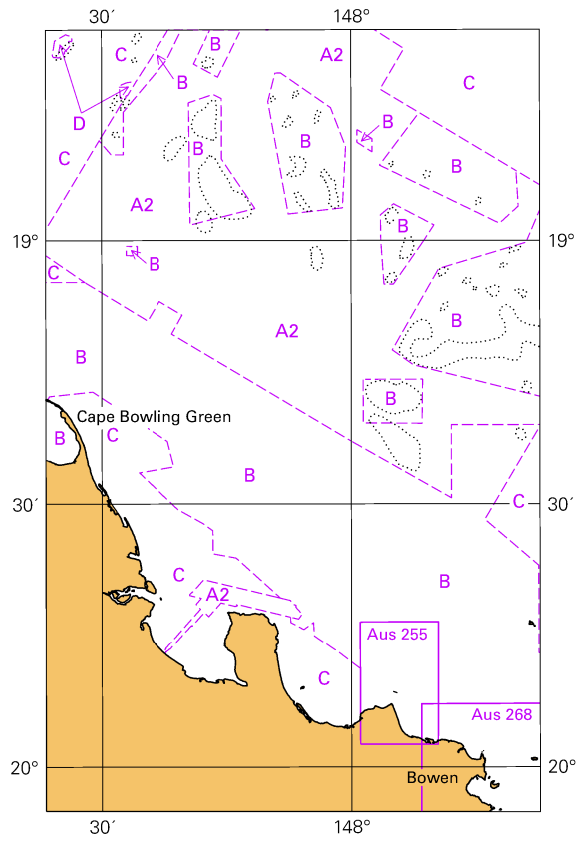


Block A for Chart Aus 826

© Commonwealth of Australia 2018

(198.6 x 117.8mm)

Zone of Confidence (ZOC) Diagram



© Commonwealth of Australia 2018
Block B for Chart Aus 826 (65.5 x 103.3mm)