



16 June 2017

Edition 12

Australian Notices to Mariners are the authority for correcting Australian Charts and Publications

AUSTRALIAN NOTICES TO MARINERS

Notices 441 - 489



Published fortnightly by the Australian Hydrographic Service

Commodore B.K. BRACE RAN
Hydrographer of Australia

SECTIONS.

- I. **Australian Notices to Mariners, including blocks and notes.**
- II. **Hydrographic Reports.**
- III. **Navigational Warnings.**

SUPPLEMENTS.

- I. **Tracings**
- II. **Cumulative List of Australian Notices to Mariners.**
- III. **Cumulative List of Temporary and Preliminary Australian Notices to Mariners.**
- IV. **Temporary and Preliminary Notices in force.**
- V. **Amendments to Admiralty List of Lights and Fog Signals (Vol K), Radio Signals (NP 281(2), 282, 283(2), 285, 286(4)) and Sailing Directions (NP 9, 13, 14, 15, 33, 34, 35, 36, 39, 44, 51, 60, 61, 62, 100, 136).**

© Commonwealth of Australia 2017

This work is copyright. Apart from any use permitted under the Copyright Act 1968, no part may be reproduced by any process, adapted, communicated or commercially exploited without prior written permission from The Commonwealth represented by the Australian Hydrographic Service.

IMPORTANT NOTICE

This edition of Notices to Mariners includes all significant information affecting AHS products which the AHS has become aware of since the last edition. All reasonable efforts have been made to ensure the accuracy and completeness of the information, including third party information, on which these updates are based. The AHS regards third parties from which it receives information as reliable, however the AHS cannot verify all such information and errors may therefore exist. The AHS does not accept liability for errors in third party information.

GENERAL INSTRUCTIONS

The substance of these notices should be inserted on the charts affected.

Bearings are referred to the true compass and are reckoned clockwise from North; those relating to lights are given as seen by an observer from seaward.

Positions quoted in notices relate to WGS84 which is the horizontal datum for all charts produced by the Australian Hydrographic Service.

The range quoted for a light is its nominal range.

Depths are with reference to the chart datum of each chart. Heights are above mean high water springs or mean higher high water, as appropriate.

The capital letter (P) or (T) after the number of any notice denotes a preliminary or temporary notice respectively, which are contained separately at the end of the permanent notices.

A star (*) adjacent to the number of a notice indicates that the notice is based on original information.

REPORTING OF DANGERS

Mariners are particularly requested to notify the AUSTRALIAN HYDROGRAPHIC SERVICE, Locked Bag 8801 Wollongong, NSW 2500 (Fax 02-4223 6599, e-mail datacentre@hydro.gov.au or, alternatively by filling in and submitting the [Hydrographic Notes](#) forms located on the web site – www.hydro.gov.au), immediately on the discovery of new dangers or suspected dangers to navigation. For changes or defects in aids to navigation notify AusSAR (Fax 02-6230 6868 or email rccaus@amsa.gov.au).

AUTHORISED USE

Copies of Australian notices are available free of charge from the Australian Hydrographic Service (AHS) website (www.hydro.gov.au) and through the eNotices (email) service (www.hydro.gov.au/enotices/enotices.htm).

Individual Notices may be copied for the purpose of inserting Notice substance on official charts and publications. Paper copies may be printed by chart agents and distributed to customers on a cost recovery basis. Participating chart agents are listed on the AHS website as providing a 'Paper Notices to Mariners' service (www.hydro.gov.au/webapps/jsp/agents/agents-list.jsp). Copies of the notices may not be sold for profit without prior written agreement.

NUMERICAL INDEX OF NOTICES TO MARINERS

Edition No 12

| Notices | Aus Chart, INT Chart, ENC Cell, AHP, BA Pubs |
|---------|--|
| 441 | Aus 237, 901, 902 |
| 442 | Aus 208 |
| 443 | Aus 810 |
| 444 | Aus 249, 251 |
| 445 | Aus 263, 264 |
| 446 | Aus 230 |
| 447 | Aus 820 |
| 448 | Aus 236 |
| 449 | Aus 236 |
| 450 | Aus 4 |
| 451 | Aus 523, 643 |
| 452 | Aus 314, 319 |
| 453 | Aus 64 |
| 454 | Aus 112 |
| 455 | Aus 32 |
| 456 | Aus 132, 778 |
| 457 | Aus 154 |
| 458 | Aus 150, 151 |
| 459 | Aus 163 |
| 460 | Aus 790, 799 |
| 461(T) | Aus 268 |
| 462(T) | Aus 301 |
| 463(T) | Aus 242 |
| 464(T) | Aus 262, 263, 830 |
| 465(T) | Aus 263, 264 |
| 466(T) | Aus 833, 4620, INT 620 |
| 467(T) | Aus 247, 265, 819, 820 |
| 468(T) | Aus 236 |
| 469(T) | Aus 236 |
| 470(T) | Aus 816 |
| 471(T) | Aus 230, 814 |
| 472(T) | Aus 4 |
| 473(P) | Aus 240, 815, 817 |
| 474(T) | Aus 20, 722 |
| 475(T) | Aus 328 |
| 476(T) | Aus 324 |
| 477(T) | Aus 319, 320, 4721, 4722, INT 721, 722 |
| 478(T) | Aus 319, 320, 322, 4721, 4722, INT 721, 722 |
| 479(T) | Aus 81 |
| 480(T) | Aus 319 |
| 481(T) | Aus 315, 318, 727, 4721, INT 721 |
| 482(T) | Aus 328, 329 |
| 483(T) | Aus 328, 744, 4723, 4725, INT 723, 725 |
| 484(T) | Aus 130, 137 |
| 485(T) | Aus 135 |
| 486(T) | Aus 182 |
| 487(T) | Aus 143, 157 |
| 488(T) | Aus 157 |
| 489(T) | Aus 154 |

NUMERICAL INDEX OF CHARTS AFFECTED

Edition No 12

| Aus Chart | Notices |
|-----------|-----------------------------|
| Aus 4 | 450, 472(T) |
| Aus 20 | 474(T) |
| Aus 32 | 455 |
| Aus 64 | 453 |
| Aus 81 | 479(T) |
| Aus 112 | 454 |
| Aus 130 | 484(T) |
| Aus 132 | 456 |
| Aus 135 | 485(T) |
| Aus 137 | 484(T) |
| Aus 143 | 487(T) |
| Aus 150 | 458 |
| Aus 151 | 458 |
| Aus 154 | 457, 489(T) |
| Aus 157 | 487(T), 488(T) |
| Aus 163 | 459 |
| Aus 182 | 486(T) |
| Aus 208 | 442 |
| Aus 230 | 446, 471(T) |
| Aus 236 | 448, 449, 468(T), 469(T) |
| Aus 237 | 441 |
| Aus 240 | 473(P) |
| Aus 242 | 463(T) |
| Aus 247 | 467(T) |
| Aus 249 | 444 |
| Aus 251 | 444 |
| Aus 262 | 464(T) |
| Aus 263 | 445, 464(T), 465(T) |
| Aus 264 | 445, 465(T) |
| Aus 265 | 467(T) |
| Aus 268 | 461(T) |
| Aus 301 | 462(T) |
| Aus 314 | 452 |
| Aus 315 | 481(T) |
| Aus 318 | 481(T) |
| Aus 319 | 452, 477(T), 478(T), 480(T) |
| Aus 320 | 477(T), 478(T) |
| Aus 322 | 478(T) |
| Aus 324 | 476(T) |
| Aus 328 | 475(T), 482(T), 483(T) |
| Aus 329 | 482(T) |
| Aus 523 | 451 |
| Aus 643 | 451 |
| Aus 722 | 474(T) |
| Aus 727 | 481(T) |
| Aus 744 | 483(T) |
| Aus 778 | 456 |
| Aus 790 | 460 |
| Aus 799 | 460 |
| Aus 810 | 443 |
| Aus 814 | 471(T) |
| Aus 815 | 473(P) |
| Aus 816 | 470(T) |
| Aus 817 | 473(P) |

| Aus Chart | Notices |
|-----------|------------------------|
| Aus 819 | 467(T) |
| Aus 820 | 447, 467(T) |
| Aus 830 | 464(T) |
| Aus 833 | 466(T) |
| Aus 901 | 441 |
| Aus 902 | 441 |
| Aus 4620 | 466(T) |
| Aus 4721 | 477(T), 478(T), 481(T) |
| Aus 4722 | 477(T), 478(T) |
| Aus 4723 | 483(T) |
| Aus 4725 | 483(T) |

| INT Chart | Notices |
|-----------|------------------------|
| INT 620 | 466(T) |
| INT 721 | 477(T), 478(T), 481(T) |
| INT 722 | 477(T), 478(T) |
| INT 723 | 483(T) |
| INT 725 | 483(T) |

441 AUSTRALIA - Products- New Charts and New Editions to be published shortly

Australian Hydrographic Service

New Charts to be published shortly

| <i>Chart</i> | <i>Title</i> | <i>Scale</i> | <i>Expected Publication Date</i> | <i>Remarks</i> |
|--------------|--------------|--------------|--------------------------------------|----------------|
| NIL | | | | |

New Editions to be published shortly

| <i>Chart</i> | <i>Title</i> | <i>Scale</i> | <i>Expected Publication Date</i> | <i>Remarks</i> |
|--------------|---|-----------------------------------|--------------------------------------|---|
| Aus 237 | Australia - East Coast - Queensland - Brisbane River - The Bar to Lytton Reach | 1:12 500 | 30 June 2017 | New edition incorporating updates to nav aids. |
| Aus 901 | East Timor - Approaches to Dili | 1:10 000 | 30 June 2017 | New edition incorporating new bathymetric data. |
| Aus 902 | East Timor - Plans in East Timor (Sheet 1) Plans: Approaches to Hera Approaches to Karabela Approaches to Kun | 1:3 750 1:5 000 1:5 000 | 30 June 2017 | New edition incorporating new bathymetric data. |

442 AUSTRALIA - NEW SOUTH WALES - Newcastle - Moorings; light buoys

Advisian

Aus 208 [1061/2016]

| | | | |
|--------|--|---------------|----------------|
| Insert | dashed line with legend, <i>Small Craft Moorings</i> , between | 32° 53'.401 S | 151° 47'.357 E |
| | | 32° 53'.423 S | 151° 47'.275 E |
| | | 32° 53'.687 S | 151° 47'.190 E |
| | | 32° 53'.803 S | 151° 47'.133 E |
| | | 32° 53'.849 S | 151° 47'.184 E |
| | | 32° 53'.691 S | 151° 47'.265 E |
| | | 32° 53'.684 S | 151° 47'.305 E |
| | | 32° 53'.646 S | 151° 47'.313 E |
| | | 32° 53'.596 S | 151° 47'.314 E |
| | | 32° 53'.507 S | 151° 47'.364 E |
| | | 32° 53'.401 S | 151° 47'.357 E |
| | out of position starboard pillar light buoy, <i>Fl.G.3s</i> , with topmark | 32° 53'.819 S | 151° 47'.123 E |
| Delete | light buoy | 32° 53'.70 S | 151° 47'.25 E |

443 AUSTRALIA - NEW SOUTH WALES - Providence Bay - Marine farm

Huon Aquaculture Group Limited , NSW Roads and Maritime Services

Aus 810 [333/2016]

| | | | |
|--------|---|--------------|---------------|
| Insert | marine farm symbol with legend, (<i>see Note</i>), centred on | 32° 39'.2 S | 152° 16'.8 E |
| | south cardinal spar light buoy, <i>VQ(6)+LFl.10s</i> , with topmark | 32° 39'.45 S | 152° 16'.70 E |
| | west cardinal spar light buoy, <i>VQ(9)10s</i> , with topmark | 32° 39'.23 S | 152° 16'.43 E |
| | east cardinal spar light buoy, <i>VQ(3)5s</i> , with topmark | 32° 39'.06 S | 152° 17'.17 E |
| | north cardinal spar light buoy, <i>VQ</i> , with topmark | 32° 38'.84 S | 152° 16'.90 E |

444 AUSTRALIA - QUEENSLAND - Bailey Islet - Light buoy

Maritime Safety Queensland Notice 157/2017

Aus 249 [1232/2016]

| | | | |
|------|------------|--------------|---------------|
| Move | light buoy | 21° 02'.2 S | 149° 32'.9 E |
| | to | 21° 02'.24 S | 149° 32'.80 E |

Aus 251 [1232/2016]

| | | | |
|------|------------|--------------|---------------|
| Move | light buoy | 21° 02'.2 S | 149° 32'.9 E |
| | to | 21° 02'.24 S | 149° 32'.80 E |

445 AUSTRALIA - QUEENSLAND - Cairns - Smiths Creek - Lights

Maritime Safety Queensland Notice 188/2017

Aus 263 [1198/2016]

| | | | |
|--------|-----------------------|---------------|----------------|
| Insert | light, <i>Fl.R.4s</i> | 16° 57'.073 S | 145° 46'.385 E |
| | light, <i>Fl.G.4s</i> | 16° 57'.032 S | 145° 46'.393 E |
| | light, <i>Fl.G.4s</i> | 16° 57'.041 S | 145° 46'.371 E |

Aus 264 [400/2017]

| | | | |
|--------|-----------------------|---------------|----------------|
| Insert | light, <i>Fl.R.4s</i> | 16° 57'.073 S | 145° 46'.385 E |
| | light, <i>Fl.G.4s</i> | 16° 57'.032 S | 145° 46'.393 E |
| | light, <i>Fl.G.4s</i> | 16° 57'.041 S | 145° 46'.371 E |

446 AUSTRALIA - QUEENSLAND - Gold Coast - The Broadwater - Loders Creek - Beacons

Gold Coast Waterways Authority

Aus 230 [46/2017]

| | | | |
|--------|--------|--------------|---------------|
| Delete | beacon | 27° 57'.35 S | 153° 24'.50 E |
| | beacon | 27° 57'.32 S | 153° 24'.61 E |

447 AUSTRALIA - QUEENSLAND - Great Keppel Island - Wreck eastwards

Australian Hydrographic Service , UKHO

Aus 820 [402/2017]

| | | | |
|---------|---|-------------|--------------|
| Replace | depth, 20m, with depth, 28 _g m | 23° 12'.2 S | 151° 15'.3 E |
|---------|---|-------------|--------------|

448 AUSTRALIA - QUEENSLAND - Moreton Bay - Rous Channel - Wreck

Department of Environment and Heritage Protection

Aus 236 [246/2017]

| | | | |
|--------|----------------|--------------|---------------|
| Insert | stranded wreck | 27° 22'.86 S | 153° 24'.49 E |
|--------|----------------|--------------|---------------|

449 AUSTRALIA - QUEENSLAND - Moreton Bay - Otter Rock - Light buoy

Maritime Safety Queensland Notice 122/2017

Aus 236 [448/2017]

| | | | |
|---------|--|-------------|--------------|
| Replace | light beacon with starboard lateral conical light buoy, <i>Fl.G.2.5s</i> , without topmark | 27° 16'.6 S | 153° 06'.8 E |
|---------|--|-------------|--------------|

450 AUSTRALIA - QUEENSLAND - Weipa - Gonbung Point - Light beacon*Former Notice - 180(T)/2017 is cancelled*

Maritime Safety Queensland

Aus 4 (plan, Port of Weipa) [281/2017]

| | | | |
|--------|--|---------------|----------------|
| Insert | light beacon, <i>Fl.R.4s CN4</i> , with port lateral topmark | 12° 40'.172 S | 141° 50'.425 E |
|--------|--|---------------|----------------|

| | | | |
|--------|--------------|--------------|---------------|
| Delete | light beacon | 12° 40'.18 S | 141° 50'.42 E |
|--------|--------------|--------------|---------------|

451 PAPUA NEW GUINEA - Huon Gulf - Labutali - Wrecks

National Maritime Safety Authority PNG

Aus 523 [809/2016]

| | | | |
|--------|------|-------------|---------------|
| Insert | hulk | 6° 47'.24 S | 146° 57'.76 E |
|--------|------|-------------|---------------|

Aus 643 [809/2016]

| | | | |
|--------|----------------|-------------|---------------|
| Insert | stranded wreck | 6° 47'.66 S | 146° 57'.16 E |
| | hulk | 6° 47'.24 S | 146° 57'.76 E |

452 AUSTRALIA - TIMOR SEA - Pasco Passage - Cartier Islet - Light buoy southwestwards

MetOcean Engineers

Aus 314 [51/2017]

Insert orange spherical light buoy, Q(5)Y.20s, without topmark 12° 49'.01 S 123° 16'.81 E

Aus 319 [51/2017]

Insert orange spherical light buoy, Q(5)Y.20s, without topmark 12° 49'.01 S 123° 16'.81 E

453 AUSTRALIA - WESTERN AUSTRALIA - Ashburton - Racon

Australian Maritime Systems Group

Aus 64 [410/2017]Insert magenta circle with legend *Racon* (G), at light beacon 21° 31'.45 S 115° 02'.94 E**454* AUSTRALIA - WESTERN AUSTRALIA - Rottneest Island - Point Clune - Light buoy**

Australian Hydrographic Service

Aus 112 [1028/2016]

Insert port lateral topmark 31° 59'.12 S 115° 31'.37 E

455 AUSTRALIA - WESTERN AUSTRALIA - Wyndham - Pender Point - Light beacon

CGL Wyndham Port

Aus 32 (plan, Approaches to Wyndham Wharf) [143/2017]

Amend elevation to 3m 15° 16'.91 S 128° 05'.61 E

456 AUSTRALIA - SOUTH AUSTRALIA - Port Augusta - Douglas Bank - Beacon

HydroSurvey Australia

Aus 132 [393/2016]Move beacon 32° 47'.83 S 137° 50'.69 E
to 32° 47'.723 S 137° 50'.534 E**Aus 778 [99/2017]**Move beacon 32° 47'.83 S 137° 50'.69 E
to 32° 47'.72 S 137° 50'.53 E**457 AUSTRALIA - VICTORIA - Port Phillip - Webb Dock - Anchoring prohibited area; light buoys**

Victorian Ports Corporation (Melbourne) Notice 146(T)/2017

Aus 154 [NE 19/5/2017]

| | | | |
|--------|---|---------------|----------------|
| Insert | anchoring prohibited limit, between | 37° 50'.986 S | 144° 54'.751 E |
| | | 37° 51'.000 S | 144° 54'.762 E |
| | | 37° 51'.057 S | 144° 54'.744 E |
| | | 37° 51'.081 S | 144° 54'.747 E |
| | | 37° 51'.012 S | 144° 54'.866 E |
| | | 37° 51'.031 S | 144° 54'.971 E |
| | | 37° 50'.949 S | 144° 55'.116 E |
| | | 37° 50'.838 S | 144° 55'.022 E |
| | special spar light buoy, <i>Fl.Y.5s</i> , without topmark | 37° 51'.012 S | 144° 54'.866 E |
| | special spar light buoy, <i>Fl.Y.5s</i> , without topmark | 37° 51'.031 S | 144° 54'.971 E |
| | special spar light buoy, <i>Fl.Y.5s</i> , without topmark | 37° 50'.990 S | 144° 55'.043 E |
| | special spar light buoy, <i>Fl.Y.5s</i> , without topmark | 37° 50'.949 S | 144° 55'.116 E |
| | special spar light buoy, <i>Fl.Y.5s</i> , without topmark | 37° 50'.898 S | 144° 55'.075 E |

458 AUSTRALIA - VICTORIA - Western Port - North Arm - Tea Tree Point to Scrub Point - Beacons

LINX Cargo Care Group

Aus 150 [172/2017]

Delete beacon 38° 23'.0 S 145° 16'.5 E

Aus 151 [173/2017]Delete beacon 38° 17'.13 S 145° 17'.40 E
Delete beacon 38° 22'.97 S 145° 16'.48 E**Aus 151 (inset, Continuation of Western Port) [173/2017]**

Delete beacon 38° 17'.13 S 145° 17'.40 E

459 AUSTRALIA - TASMANIA - Burnie - Infrastructure

Tasmanian Ports Corporation , Toll ANL Bass Strait Shipping

Aus 163 [250/2017]

Insert dolphin, centred on 41° 03'.229 S 145° 54'.837 E

Aus 163 (plan, Burnie) [250/2017]Insert dolphin, centred on 41° 03'.229 S 145° 54'.837 E
continuous line, between 41° 03'.230 S 145° 54'.835 E
41° 03'.231 S 145° 54'.808 E**460 AUSTRALIA - TASMANIA - Port Latta - Anchorage; port limit**

Tasmanian Ports Corporation

Aus 790 [368/2017]

Delete anchorage area, centred on 40° 48'.0 S 145° 25'.4 E

Aus 799 [250/2017]

Insert accompanying block 40° 49'.0 S 145° 27'.0 E

461(T)/2017 AUSTRALIA - QUEENSLAND - Bowen - Obstruction

Maritime Safety Queensland

An obstruction marked by a special light buoy, *Fl. Y.2-5s*, exists in position 20° 01'.40 S 148° 15'.26 E.

Chart temporarily affected - Aus 268

462(T)/2017 AUSTRALIA - QUEENSLAND - Boyd Point - Exclusion zone

Maritime Safety Queensland Notice 203/2017

An exclusion zone exists in the vicinity of position 12° 55'.6 S 141° 37'.0 E. The western extremity is marked by special light buoys, *Q.Y.*

Chart temporarily affected - Aus 301

463(T)/2017 AUSTRALIA - QUEENSLAND - Bundaberg - Burnett River - Harbour works completed*Former Notice - 19(T)/2017 is cancelled*

Maritime Safety Queensland

Cancel this notice on receipt.

Chart formerly affected - Aus 242

464(T)/2017 AUSTRALIA - QUEENSLAND - Cairns - Dredging operations

Maritime Safety Queensland

The dredge *Brisbane* and vessels *Pacific Conquest* and *Norfolk* are conducting dredging and survey operations in the Port of Cairns.

Mariners are advised to navigate with caution in the area.

Chart temporarily affected - Aus 262 - Aus 263 - Aus 830

465(T)/2017 AUSTRALIA - QUEENSLAND - Cairns - Dredging operations completed*Former Notice - 1121(T)/2016 is cancelled*

Maritime Safety Queensland

Cancel this notice on receipt.

Chart formerly affected - Aus 263 - Aus 264

466(T)/2017 AUSTRALIA - QUEENSLAND - Fairway Channel - Light beacon unlit; racon non operational

Australian Maritime Safety Authority Auscoast Warning 99/2017

The light beacon, *Fl.7-5s 21m 14M* (13° 54'.09 S 144° 14'.30 E), is unlit.

The racon at light beacon (13° 54'.09 S 144° 14'.30 E) is non operational.

Chart temporarily affected - Aus 833 - Aus 4620 (INT 620)

467(T)/2017 AUSTRALIA - QUEENSLAND - Fitzroy River to Port Alma - Nav aids off station; nav aids destroyed; depths unreliable; obstructions*Former Notice - 290(T)/2017 is cancelled*

Maritime Safety Queensland Notice 211(T)/2017

Cancel this notice on receipt.

Chart formerly affected - Aus 247 - Aus 265 - Aus 819 - Aus 820

468(T)/2017 AUSTRALIA - QUEENSLAND - Moreton Bay - Bramble Bay - Cable laying operations
Maritime Safety Queensland

Cable laying operations are in progress under the Houghton Highway Bridges (27° 16'.4 S 153° 04'.3 E).

Mariners are advised to navigate with caution in the area.

Chart temporarily affected - Aus 236

469(T)/2017 AUSTRALIA - QUEENSLAND - Moreton Bay - Redcliffe - Light beacon destroyed
Maritime Safety Queensland Notice 208(T)/2017

The east cardinal light beacon, *Q(3)10s* (27° 13'.55 S 153° 07'.13 E) has been destroyed.

Chart temporarily affected - Aus 236

470(T)/2017 AUSTRALIA - QUEENSLAND - North Gardner Bank - Foul ground
Maritime Safety Queensland Notice 24/2017

A foul ground exists in position 24° 56'.30 S 153° 26.90 E.

Chart temporarily affected - Aus 816

471(T)/2017 AUSTRALIA - QUEENSLAND - Palm Beach to Gold Coast - Dredging operations
Maritime Safety Queensland Notice 205(T)/2017

The dredge *Balder R* and support vessel *Rind R* are conducting dredging operations between Palm Beach (28° 06'.8 S 153° 28'.5 E) and The Spit (27° 56'.2 S 153° 25'.8 E) within 1.5M of the coast .

Vessels will monitor VHF Ch 16.

Mariners are advised to navigate with caution in the area.

Chart temporarily affected - Aus 230 - Aus 814

472(T)/2017 AUSTRALIA - QUEENSLAND - Weipa - Dredging operations completed
Former Notice - 382(T)/2017 is cancelled
Maritime Safety Queensland

Cancel this notice on receipt.

Chart formerly affected - Aus 4

473(P)/2017 AUSTRALIA - QUEENSLAND - Wide Bay - Hook Point - Shoaling; navline
Maritime Safety Queensland

Due to shoaling, the bearing of the light, *Fl.WRG.3s (F Day)* (25° 47'.03 S 153° 04'.73 E), has been amended to 269°6'.

The chart will be updated in due course.

Chart which will be affected - Aus 240 - Aus 815 - Aus 817

474(T)/2017 AUSTRALIA - NORTHERN TERRITORY - East Vernon Island - Obstructions
Department of Defence

A lost anchor and cables, marked by a white buoy, exist in position 12° 05'.29 S 131° 09'.42 E.

Chart temporarily affected - Aus 20 - Aus 722

475(T)/2017 AUSTRALIA - WESTERN AUSTRALIA - Barrow Island - Subsea operations northwestwards
 Quadrant Energy

Vessel *Rem Etive* is conducting subsea operations within a 1M radius of position 20° 36'.30 S 114° 54'.76 E.

Chart temporarily affected - Aus 328

476(T)/2017 AUSTRALIA - WESTERN AUSTRALIA - Broome - Accommodation vessel westwards
 INPEX

Vessel *Floatel Triumph* is anchored in position 17° 58'.0 S 121° 52'.0 E.

Mariners are advised to navigate with caution in the area. 2M clearance requested.

Chart temporarily affected - Aus 324

477(T)/2017 AUSTRALIA - WESTERN AUSTRALIA - Browse Island - Drill rig northwestwards
 MODU *ENSCO 5006*

Drill rig *ENSCO 5006* is conducting drilling operations in position 13° 50'.83 S 123° 19'.22 E.

Chart temporarily affected - Aus 319 - Aus 320 - Aus 4721 (INT 721) - Aus 4722 (INT 722)

478(T)/2017 AUSTRALIA - WESTERN AUSTRALIA - Browse Island - Drill rig northwestwards moved
 Former Notice - 150(T)/2017 is cancelled
 MODU *ENSCO 5006*

Cancel this notice on receipt.

Chart formerly affected - Aus 319 - Aus 320 - Aus 322 - Aus 4721 (INT 721) - Aus 4722 (INT 722)

479(T)/2017 AUSTRALIA - WESTERN AUSTRALIA - Geraldton - Dredging operations
 Mid West Ports

Dredging operations are in progress in the vicinity of position 28° 46'.50 S 114° 36'.13 E.

A submerged pipeline exists across the entrance to the harbour, between positions 28° 46'.23 S 114° 35'.94 E and 28° 46'.23 S 114° 36'.12 E. The least depth over the pipeline is 12.3m.

Mariners are advised to navigate with caution in the area.

Chart temporarily affected - Aus 81

480(T)/2017 AUSTRALIA - WESTERN AUSTRALIA - Goeree Shoal to Browse Island - Scientific instruments recovered

Former Notice - 577(T)/2016 is cancelled
 MetOcean Engineers

Cancel this notice on receipt.

Chart formerly affected - Aus 319

481(T)/2017 AUSTRALIA - WESTERN AUSTRALIA - Lesueur Island - Seismic survey northwards
Santos Ltd

MV *Polarcus Naila*, with a 6100m towed array, and support vessels *Mermaid Searcher* and *Empress* are conducting a seismic survey in an area bounded by the following positions:

12° 44'.29 S 127° 13'.60 E
12° 36'.13 S 127° 26'.84 E
13° 22'.57 S 127° 59'.93 E
13° 30'.62 S 127° 45'.90 E.

Mariners are advised to navigate with caution in the area. 3M clearance requested.

Chart temporarily affected - Aus 315 - Aus 318 - Aus 727 - Aus 4721 (INT 721)

482(T)/2017 AUSTRALIA - WESTERN AUSTRALIA - North West Cape - Subsea operations northwestwards completed

Former Notice - 390(T)/2017 is cancelled
Australian Maritime Safety Authority

Cancel this notice on receipt.

Chart formerly affected - Aus 328 - Aus 329

483(T)/2017 AUSTRALIA - WESTERN AUSTRALIA - Thevenard Island - Gas field to be decommissioned
MODU *Ocean Monarch*, Australian Maritime Safety Authority Auscoast Warning 104/2017

Drill rig *Ocean Monarch* is conducting works associated with the decommissioning of the Griffin field within a 5M radius of position 21° 13'.31 S 114° 38'.74 E.

Chart temporarily affected - Aus 328 - Aus 744 - Aus 4723 (INT 723) - Aus 4725 (INT 725)

484(T)/2017 AUSTRALIA - SOUTH AUSTRALIA - Port Adelaide - North Haven - Shoaling; dredging operations

Former Notice - 1220(T)/2016 is cancelled
Department of Planning, Transport and Infrastructure SA Notice 37/2016, HydroSurvey Australia

Significant shoaling exists and dredging operations are in progress in the entrance channel to Gulf Point Marina (34° 47'.7 S 138° 28'.9 E).

Shoaling has extended the 2m bank southwestwards, with a least depth of 0.9m in position 34° 47'.51 S 138° 28'.70 E.

Mariners are advised to navigate with caution in the area.

Chart temporarily affected - Aus 130 - Aus 137

485(T)/2017 AUSTRALIA - SOUTH AUSTRALIA - Whyalla - Light beacons destroyed

Former Notice - 483(T)/2016 is cancelled
Department of Planning, Transport and Infrastructure SA Notice 3/2016, 9/2016, 6/2017

The starboard lateral light beacon, *F.G No11* (33° 02'.06 S 137° 35'.95 E) has been destroyed; a special light buoy, *Fl.Y.3s*, exists in situ.

The starboard lateral light beacon, *F.G No7* (33° 02'.09 S 137° 36'.15 E) has been destroyed; a special light buoy, *F.G*, exists in situ.

Chart temporarily affected - Aus 135

486(T)/2017 AUSTRALIA - VICTORIA - Lakes Entrance - Dredging operations

Gippsland Ports Notice 163(T)/2017

The dredge *Kalimna* is conducting dredging operations in the vicinity of position 37° 53'.22 S 147° 58'.13 E.

The dredge with its deployed anchors and pipeline will be impeding the northern side of the eastern entrance to Hopetoun Channel.

The dredge will display appropriate lights and shapes. The pipeline and anchor mooring buoys are unlit.

Mariners are advised to navigate with caution in the area.

Chart temporarily affected - Aus 182**487(T)/2017 AUSTRALIA - VICTORIA - Port Phillip - Point Richards Channel - Light beacon restored**

Former Notice - 82(T)/2017 is cancelled

Total Hydrographic

Cancel this notice on receipt.

Chart formerly affected - Aus 143 - Aus 157**488(T)/2017 AUSTRALIA - VICTORIA - Port Phillip - Wedge Point - Light buoy off station**

Parks Victoria Notice 156(T)/2017

The special light buoy, *Fl(4)Y.10s* (38° 03'.54 S 144° 38'.65 E), is off station.

Chart temporarily affected - Aus 157**489(T)/2017 AUSTRALIA - VICTORIA - Port Phillip - Maribyrnong River - Harbour works completed**

Former Notice - 705(T)/2015 is cancelled

Victorian Ports Corporation (Melbourne) Notice 160(T)/2017

Cancel this notice on receipt.

Chart formerly affected - Aus 154

II

HYDROGRAPHIC REPORTS

NIL

III

NAVIGATION WARNINGS

The Australian Hydrographic Service will no longer compile Section III of the Australian Notices to Mariners. For the most up to date navigation warnings please refer to:

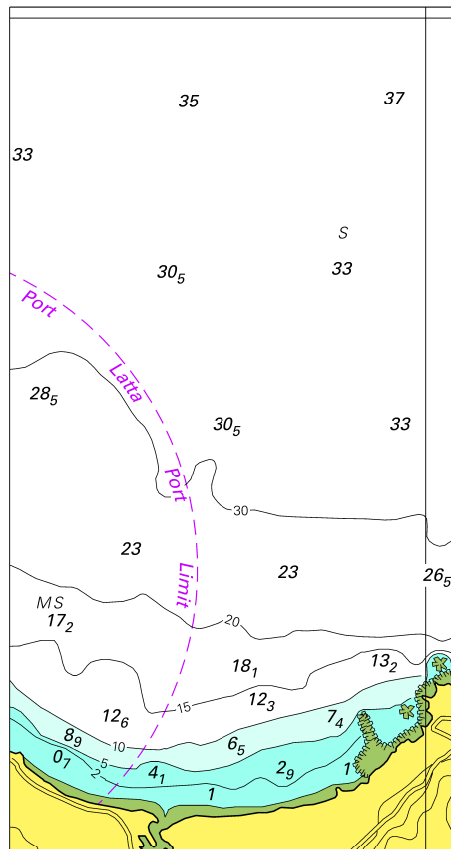
AMSA Navigation Warnings

<http://amsa.gov.au/search-and-rescue/distress-and-safety-comms/msi/msi-email/index.asp>

New Zealand Notices to Mariners (Navarea XIV warnings)

<http://www.linz.govt.nz/sea/maritime-safety/notices-mariners>

To accompany Australian Notice to Mariners 460/2017



© Commonwealth of Australia 2017

Block for Chart Aus 799

(59.3 x 111.8mm)